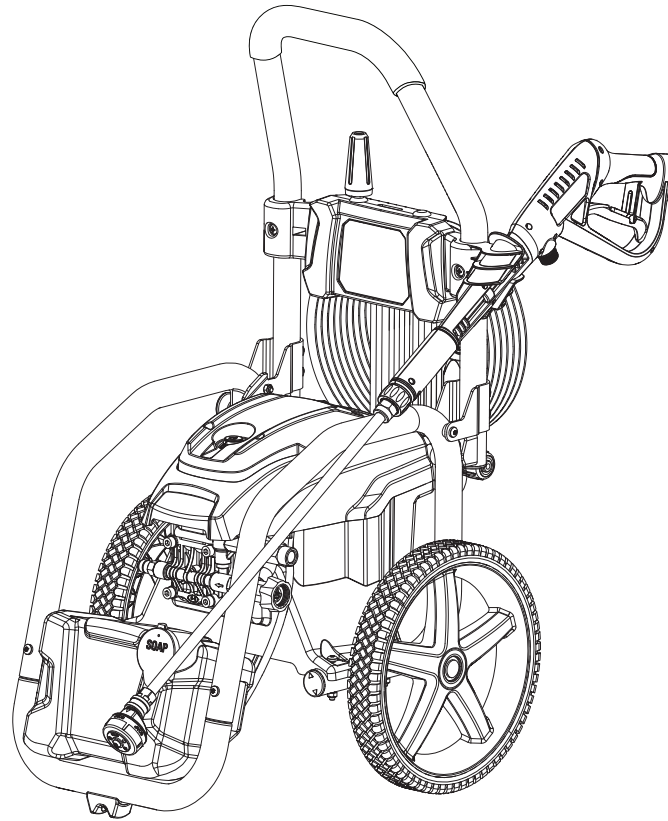


REPLACEMENT PARTS LIST

BRAND RYOBI		DESCRIPTION Electric Pressure Washer
MODEL NO. RY143011VNM	MFG. NO. 095079816 095079845	



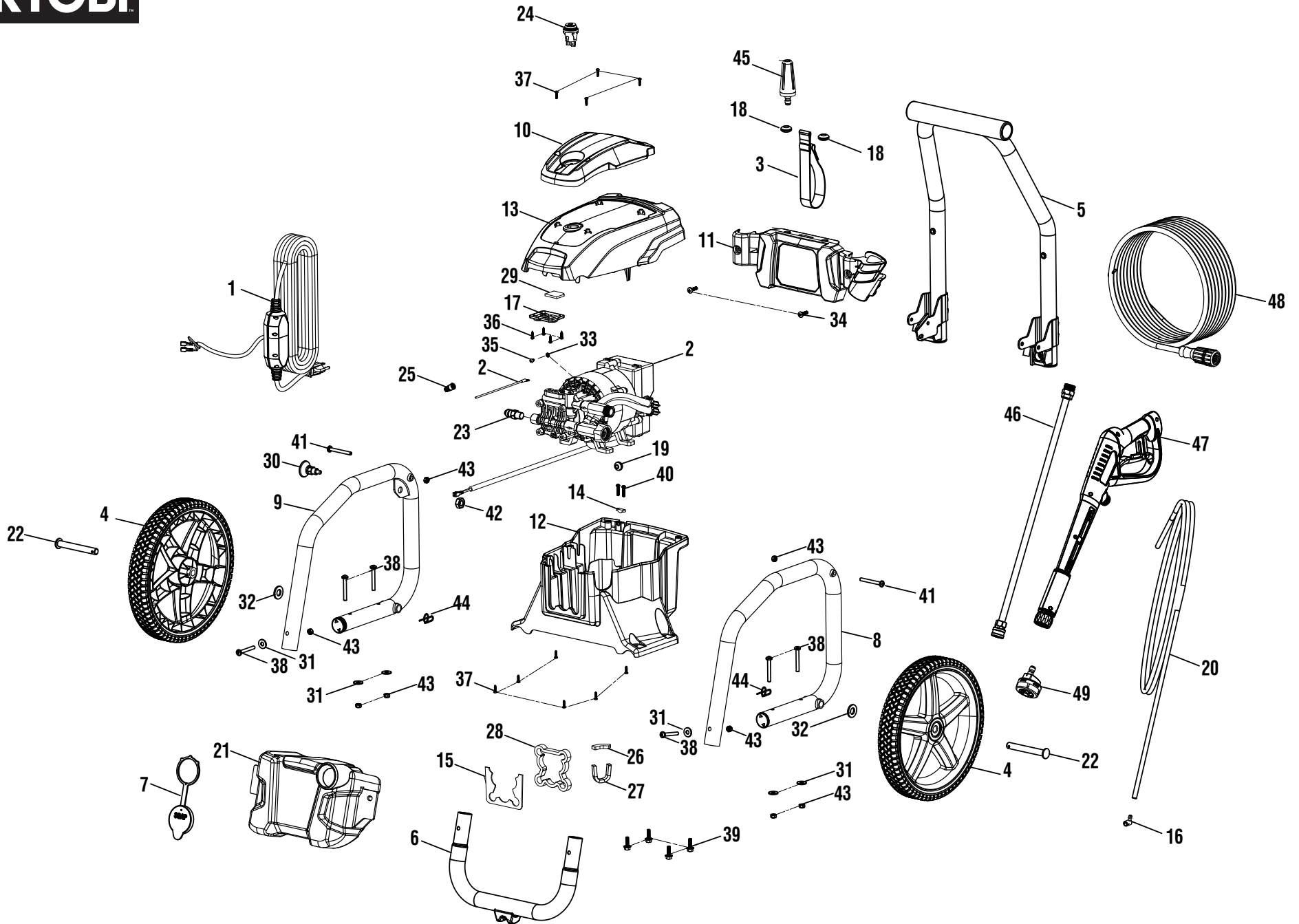
TTI OUTDOOR POWER EQUIPMENT, INC.

P.O. Box 1288, Anderson, SC 29622 ■ 1-800-525-2579 ■ www.ryobitools.com

998000717

7-01-22 (Rev:01)

The model number and manufacturing location will be found on a label attached to the product. Always mention this information in all communications regarding this product and when ordering parts.



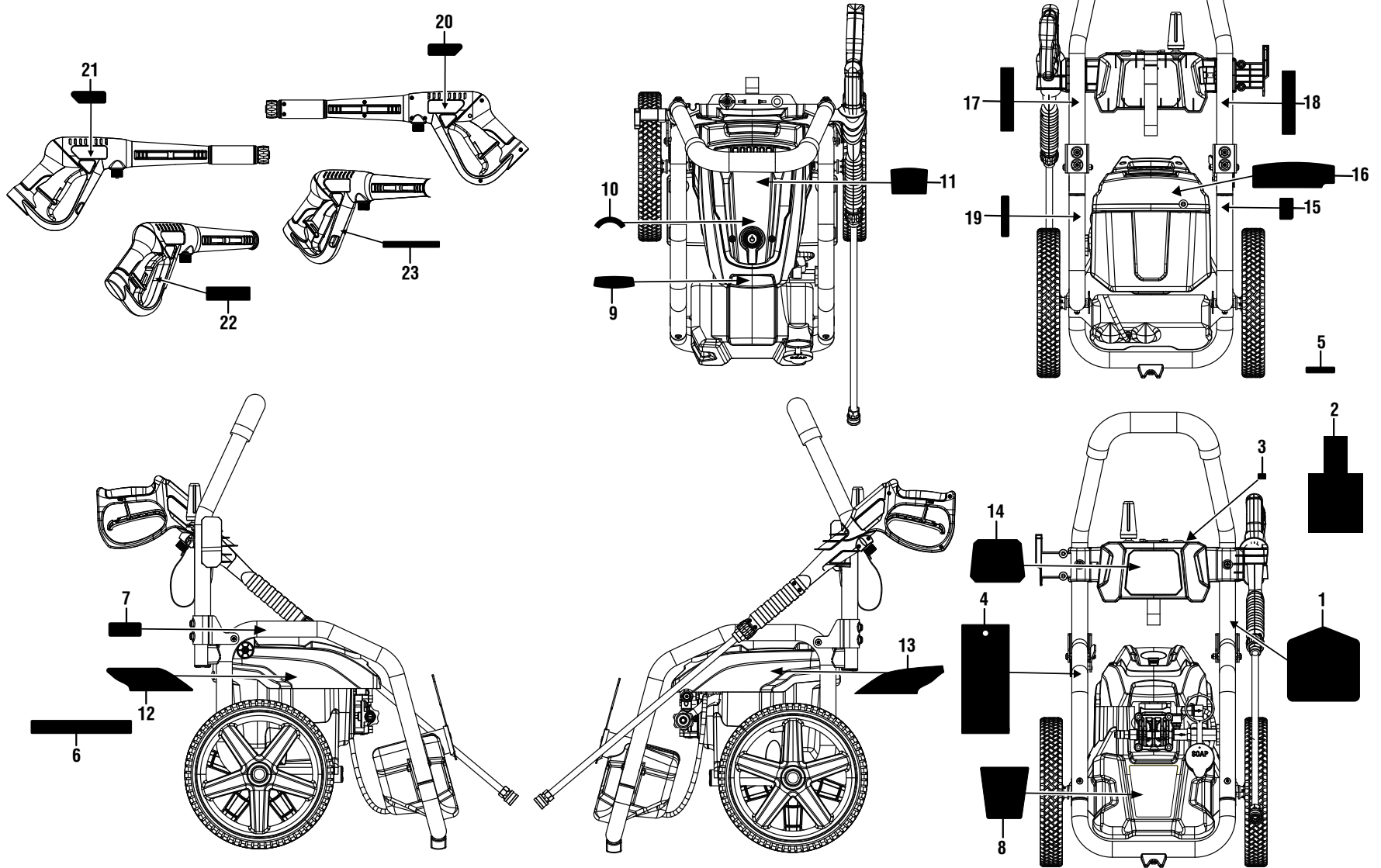


RY143011VNM

PARTS LIST – FIGURE A

KEY NO.	PART NO.	DESCRIPTION	QTY.
1	290426053	Electrical Cord Grounded Assembly	1
2	290606013	Wire Contact Motor & Ground Electrode	1
3	308350008	Hose And Cord Strap	1
4	308451094	Wheel	2
5	308582087	Handle Assembly	1
6	308659059	Front Frame Assembly	1
7	310650004	Soap Tank Cap(Blue)	1
8	310703052	Main Frame Assembly (Left)	1
9	310704040	Main Frame Assembly (Right)	1
10	519313033	Motor Shroud Cover	1
11	522032077	Performance Panel	1
12	522032078	Lower Housing	1
13	522038053	Motor Shroud	1
14	528499001	Electric Cord Clip	1
15	525984003	Pump Head Seal	1
16	529062002	Detergent Inlet Adapter	1
17	536489001	Power Switch Cover	1
18	561383004	Rubber Grommets	2
19	561383025	Housing Grommet	1
20	570728011	Chemical Siphon Tube	1
21	580875014	Soap Tank	1
22	620599034	Axle	2
23	678169004	Thermal Release Valve	1
24	760504018	Switch	1
25	870601001	Wire Nut	1
26	980414046	Foam (39 mm)	1

KEY NO.	PART NO.	DESCRIPTION	QTY.
27	980414047	Foam (85 mm)	1
28	980414048	Foam (352 mm)	1
29	980414049	Switch Cover Seal Foam	1
30	308910010	Handle Lock Assembly	1
31	638128003	Washer (ID.31 x OD.75 x.07t)	6
32	638275002	Washer (1/2")	2
33	638454005	Toothed Washer (M4)	1
34	660481019	Bolt (M6 x 20 mm, Pan Head)	2
35	660481028	Bolt (M4 x 6 mm, Pan Head)	1
36	661403015	Screw (ST 2.9 x 14 mm)	4
37	661403027	Screw (ST 4.2 x 15mm, Pan Head)	10
38	661503015	Screw (M6 x 48 mm, T30 Torx Pan Head)	6
39	661505038	Bolt (M6 x 20 mm)	4
40	661610008	Screw (ST 3.5 x 20 mm)	2
41	661834002	Screw (M6 x 55 mm, T30 Torx Pan Head)	2
42	678518002	Jam Nut (1/2-20)	1
43	678610006	Nut (M6)	8
44	678899006	Ring Clip Axle	2
45	308311033	Turbo Nozzle	1
46	308506014	21" Wand	1
47	308760087	Trigger Handle	1
48	308835116	Hose	1
49	310448072	5-N-1 Nozzle Assembly	1
	Not Shown:		
	998000715	Operator's Manual	
	998000716	Quick Refrence Guide	



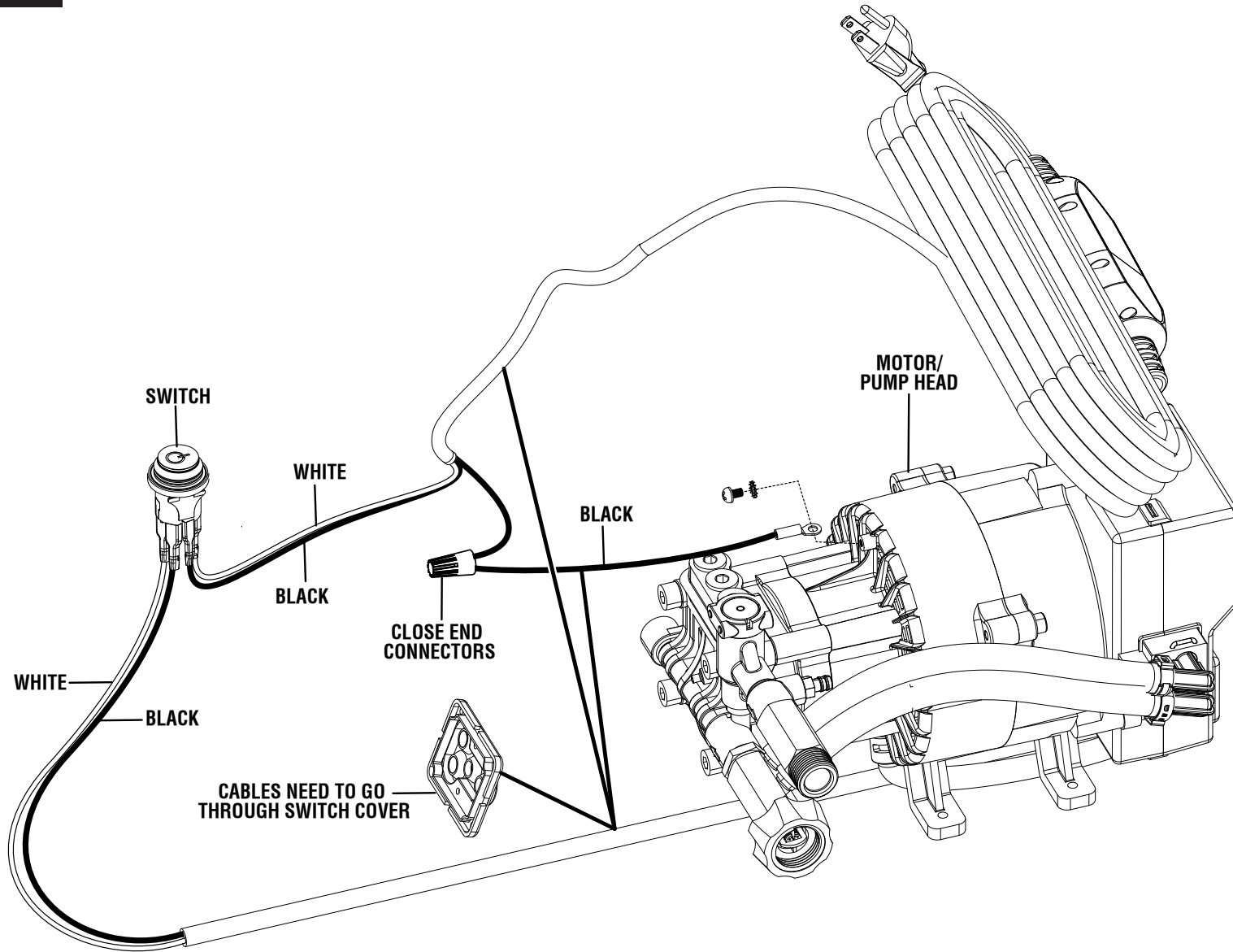


RY143011VNM

PARTS LIST – LABELS

KEY NO.	PART NO.	DESCRIPTION	QTY.
1	918016090	Nozzle Hangtag	1
2	940324032	Cordwrap Warning Label	1
3	940378017	Nozzle Storage Label	1
4	940473008	Warning Notice Hangtag	1
5	940603006	Cord Plug Label	1
6	940654338	Outlet Cord Wrap Label Label	1
7	940693003	Release Pin Pull Label	1
8	940779288	Detergent Soap Label	1
9	940779477	Brushless Label	1
10	940779482	On / Off Label	1
11	940779493	High Performance Label	1
12	940779494	Danger Label	1

KEY NO.	PART NO.	DESCRIPTION	QTY.
13	940779495	Icon/Danger Label	1
14	940779496	Performance Label	1
15	940779497	QR Code Label	1
16	940779498	Danger Regulatory Label	1
17	940779499	Starting Instruct 1 Label	1
18	940779500	Starting Instruct 2 Label	1
19	941486008	Ryobi Inquiries Label	1
20	940654083	Trigger Warning Label	1
21	940705305	Logo Label	1
22	940654228	Trigger Warning Label Fr/Sp	1
23	940904018	Trigger Rating Label	1



WIRING DIAGRAM