

HONDA

GENERAL PURPOSE ENGINE

GCV200

PARTS CATALOGUE

FOREWORD INDEX

1

ENGINE GROUP

2

PART NUMBER INDEX

3

PART NAME INDEX

4

Instruction for use of parts catalogue

- **This parts catalogue was prepared based on the latest information available as of March 01, 2021.**
 - See the parts catalogue news for any revision that is made after March 01, 2021.
- **Always specify the part number when ordering a part.**
 - Check the model, type, serial numbers, color, maker, and the size as needed before ordering a part.
 - Note that the illustrations (part drawings) can differ from the actual parts in shape. They are given just to help you to refer to the parts.
- **When modifications or additions to this parts catalogue are made, a revised edition will be issued at an appropriate time, with successively progressing revision numbers on the cover. We recommend obtaining such revisions in order to keep your parts catalogue up-to-date at all times. To check whether a parts catalogue revision has been issued, please contact your Honda distributor.**

Initial version issue date July 20, 2020
Honda Motor Co., Ltd.

CONTENTS

	Page
• Instruction for use of parts catalogue	1
• How to refer to the part information	2
• Part catalogue structure	3
• When the parts were revised	4
• Abbreviations used in the parts catalogue	4
• How to check the part block and serial numbers	5
• Models, parts catalogue codes and applicable serial numbers	6
• Features of each type	7
• Fuel hose, general purpose hoses and vinyl hose	8
• Illustrated index	9
• ENGINE GROUP	11
• PART NO. INDEX	29
• PART NAME INDEX	30

1

1

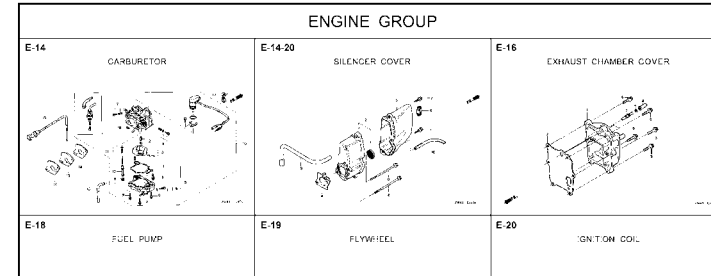
2

3

4

How to refer to the part information

A Reference with "Illustrated index"



B Reference with "Part number index"

PART NO. INDEX				
Part Number	Page Ref.	Part Number	Page Ref.	Pi
06000		15212-ZW9-000	49 7	17583
		15220-ZW9-003	49 8	17583
06316-ZW9-000	104 1	15332-ZW9-000	74 2	17611
		15332-ZW9-A30	76 2	17611
11000		15400-PFB-004	46 5	17612
		15422-ZW9-000	49 9	17620
11300-ZW9-000	46 1	15473-881-000	49 10	17620
11300-ZW9-800	46 1	15474-ZW9-000	49 11	17624
11340-ZW9-000	46 2	15611-921-000	45 6	17650
11342-ZW9-000	46 3	15655-ZW9-000	46 6	17650
11381-ZW9-003	47 1			17660
		16000		17661
12000		16010-ZV4-005	55 1	17665
12000-ZW9-000ZA	46 4	16011-ZV4-005	55 2	17670
12155-ZV4-A00	48 1	16013-ZW9-003	55 3	17680
12166-ZW9-000	45 1	16016-ZW9-003	55 4	17701
12209-GB4-681	51 1	16016-ZW9-721	55 4	17701
12210-ZW9-000ZA	45 2	16023-ZW9-003	55 5	17701
12216-ZE2-300	74 1	16024-ZV4-650	55 6	17701
		16028-ZV4-650	55 7	17702

C Reference with "Part name index"

PART NAME INDEX		
Part name	Page	Ref.
[A]		
ABSORBER, FUEL	80	5
ARMATURE COMP.	62	7
ARM COMP., LINK JOINT	102	18
ARM COMP., SHIFT LINK	102	14
ARM COMP., TILT	97	20
ARM, FUEL PUMP ROCKER	51	4
ARM, REVERSE LOCK	97	18
ARM, SHIFT LINK	92	7
ARM, STOPPER	52	12
ARM, THROTTLE REMOTE	92	6
ARM, VALVE ROCKER	51	3
[B]		
BAG, TOOL, 160MM	101	10
BAND	103	37
BAND B1, WIRE	87	1
BAND, CORD	85	18
BAND, TUBE CLIP, 11MM	81	20
BAND, TUBE CLIP, 12.5MM	81	19

E-2 CYLINDER HEAD

Block No.

Ref No.

Ref. No.	Part No.	Description	Reqd. QTY						Serial No.	Parts catalogue code
			9901	9901	1001	1001	1001	1001		
1	12166-ZW9-000	STOPPER, ENGINE SIDE	2	2	2	2	2	2		
2	12210-ZW9-000ZA	HEAD COMP., CYLINDER	1	1	1	1	1	1		
3	12251-ZW9-003	GASKET, CYLINDER HEAD	1	1	1	1	1	1		
4	12310-ZW9-000	COVER COMP., HEAD	1	1	1	1	1	1		
5	12312-ZW9-000	PACKING, HEAD COVER	1	1	1	1	1	1		
6	15611-921-000	CAP, OIL (NO GAUGE)	1	1	1	1	1	1		
7	16617-ZW9-000	HOLDER, CABLE	1	1	1	1	1	1	SC,SG	
	16617-ZW9-010		1	1	1	1	1	1	1001800 LHC,LHD	
			1	1	1	1	1	1	1001801 LHC,LHD	
8	35673-ZV5-003	SENSOR ASSY., WATER	1	1	1	1	1	1		
9	90003-ZW9-000	BOLT, FLANGE, 6X22	6	4	4	4	4	4		
10	90007-ZW9-003	BOLT, FLANGE, 8X83	6	6	6	6	6	6		
11	90011-ZW9-000	BOLT, FLANGE, 6X14 (CT200)	1	1	1	1	1	1		
12	90020-ZW9-000	BOLT, FLANGE, 8X40	2	2	2	2	2	2		
13	91202-KJ9-003	OIL SEAL, 20X32X6	1	1	1	1	1	1		
14	91301-805-000	O-RING, 26X2.7	1	1	1	1	1	1		
15	91307-PK2-005	O-RING, 9.5X1.5 (HONDA KIKAKI)	1	1	1	1	1	1		
16	98059-55916	PLUG, SPARK (CR5EH-9)	2	2	2	2	2	2		
	98059-55926	PLUG, SPARK (U16FER9)	2	2	2	2	2	2		

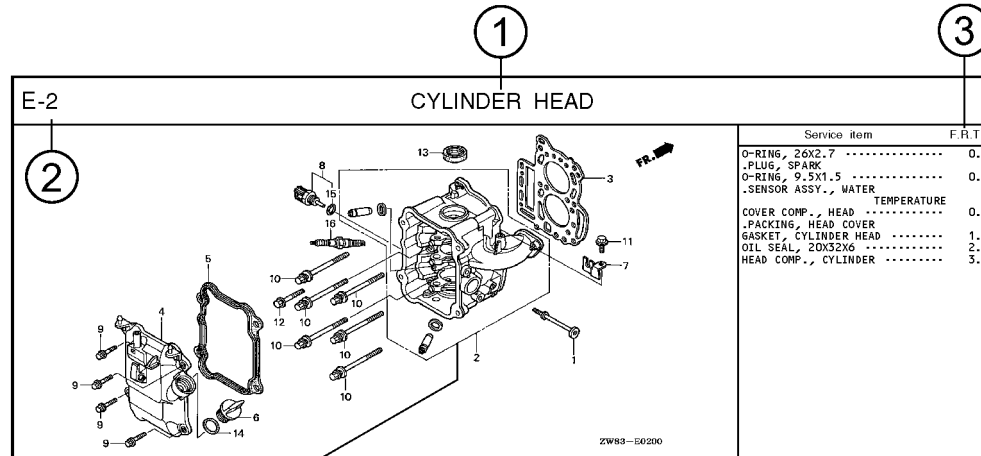
Page No.

2000.09.20 E

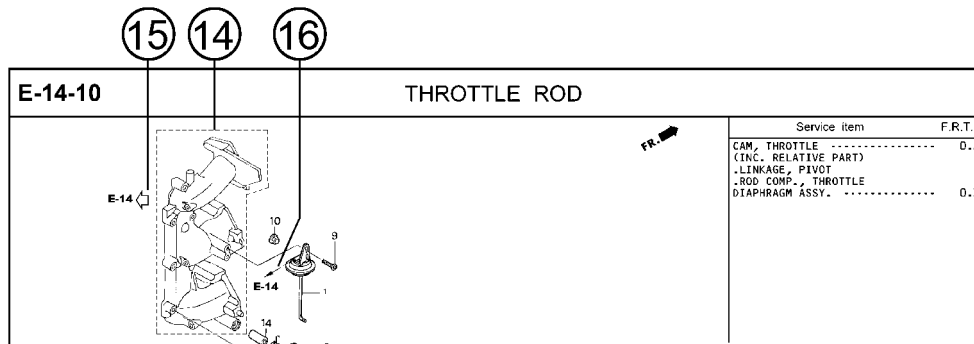
2021.03.01

E

Part catalogue structure



Ref. No.	Part No.	Description	Reqd. QTY						Serial No.	Parts catalogue code
			BF 9.9D1	BFP 9.9D1	BF 10D1	BFP 10D1	BF 10B1	BFP 10B1		
1	12166-zw9-000	STOPPER, ENGINE SIDE	2	2	2	2	2	2		
2	12210-zw9-000ZA	HEAD COMP., CYLINDER								
		NH8.....DARK GRAY	1	1	1	1	1	1		
3	12251-zw9-003	GASKET, CYLINDER HEAD	1	1	1	1	1	1		
4	12310-zw9-000	COVER COMP., HEAD	1	1	1	1	1	1		
5	12312-zw9-000	PACKING, HEAD COVER	1	1	1	1	1	1		
6	15611-921-000	CAP, OIL	1	1	1	1	1	1		
		(NO GAUGE)								
7	16617-zw9-000	HOLDER, CABLE	1	1	1	1	1	1	SC,SG	
	16617-zw9-010		1	1	1	1	1	1	1001800 LHC,LHD	



① Block title ② Block number

③ Service item/Flat rate time

④ Reference number

- Title number marked with the parenthesis or parentheses indicates that it continues from the previous page.

⑤ Part number ⑥ Honda color code

⑦ Description

⑧ Assemblies

- Sections framed with broken lines in the exploded view drawings are available as complete assemblies. (Their individual parts can also be obtained.)

⑨ Color description

⑩ Note

- Notes are shown with the parentheses in the part name column.

⑪ Required quantity

- Required QTY shown in the parenthesis or parentheses indicates the optional part.
- Required QTY marked with "N" Indicates the optional part that should be selected as needed.
- Required QTY indicates the number of the part used in the block.

⑫ Serial number

⑬ Type

- When the type column is blank, it indicates that the part is applicable to all types.
- As the type of the actual unit may differ from the "parts catalogue, type" please refer to "Models, types and applicable serial numbers" for confirmation.

⑭

- Parts enclosed within a dotted line are covered in a different block.

⑮

- A hollow arrow indicates the block No. for the parts enclosed within a dotted line.

⑯

- A solid arrow indicates the block No. the part in question is connected to.

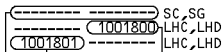
When the parts were revised



Be sure to check the serial number!!



Ref. No.	Part No.	Description	Reqd. QTY						Serial No.
			BF 99D1	BFP 9.9D1	BF 10D1	BFP 10D1	BF 10B1	BFP 10B1	
1	12166-ZW9-000	STOPPER, ENGINE SIDE	2	2	2	2	2	2	
2	12210-ZW9-000ZA	HEAD COMP., CYLINDER *NH8*.....DARK GRAY	1	1	1	1	1	1	
3	12251-ZW9-003	GASKET, CYLINDER HEAD	1	1	1	1	1	1	
4	12310-ZW9-000	COVER COMP., HEAD	1	1	1	1	1	1	
5	12312-ZW9-000	PACKING, HEAD COVER	1	1	1	1	1	1	
6	15611-921-000	CAP, OIL (NO GAUGE)	1	1	1	1	1	1	
7	16617-ZW9-000	HOLDER, CABLE (###).....	1	1	1	1	1	1	
	16617-ZW9-010	1	1	1	1	1	1	



The number has been used from the initial model without revision. When shown at the left side, it is applicable to the models of No.1001801 and the subsequent numbers. When shown at the right side, it is applicable to the models up to No.1001800.

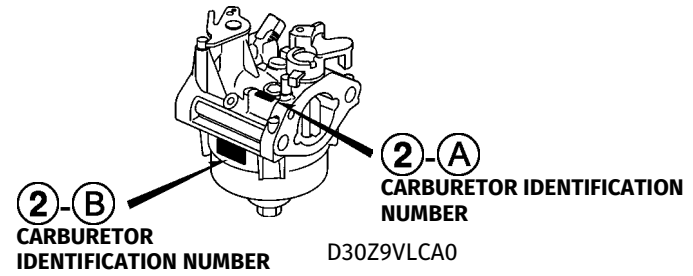
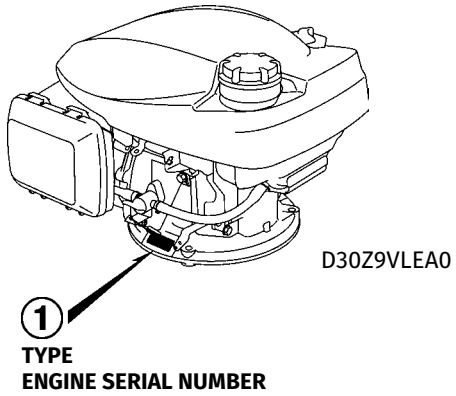
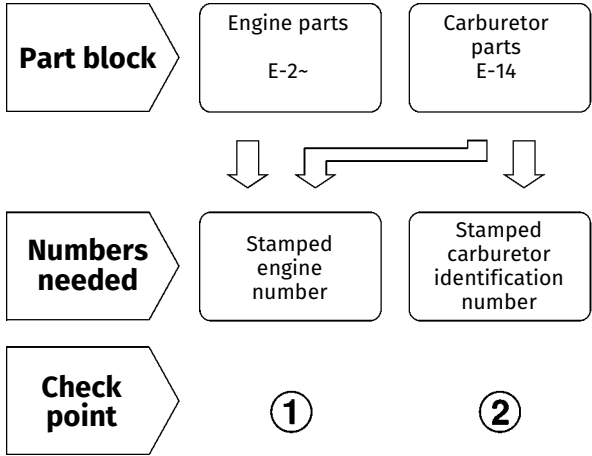
• The parts listed with "###" at the end of the parts name have limited supply period (parts not for sale).

Abbreviations used in the parts catalogue

• The following abbreviations are used in the parts name column.

- A Ampere
- A.C. Alternating current
- ASSY. Assembly
- AT. Automatic transmission
- C.D.I. Capacitive discharge ignition
- COMP. Complete
- D.C. Direct current
- EX. Exhaust
- G.F.C.I. Ground fault circuit interruptor
- HEX. Hexagonal
- H.S.T. Hydrostatic transmission
- FR. Front
- IN. Inlet
- L (100L) ... Link (100 Links)
- L. Left
- MM Millimeter
- MT. Manual Transmission
- P.T.O. Power take off
- R. Right
- RR. Rear
- STD. Standard
- T (22T) Tooth (22 Teeth)
- V Volt
- W Watt

How to check the part block and serial numbers



Models, parts catalogue codes and applicable serial numbers

- Models, parts catalogue codes and applicable serial Nos. given in this parts catalogue can be identified as follows.

Model	Type	Parts catalogue type	Applicable engine serial No.	Applicable carburetor identification No.	
GCV170A	S3DB	S3DB	GJAJA-1000001~	BB76J A	
	S3HB	S3HB			
GCV170LA	A1A	A1A		BB76K A	
	G5B	G5B			
	G5BR	G5BR			BB76J A
	S3B	S3B			
GCV200A	S3HE	S3HE	GJAVA-1000001~	BB76G A	
	S3LE	S3LE			
GCV200LA	G5B	G5B			BB76G A
	G5BR	G5BR			
	S3C	S3C			
	S3L	S3L			

* Of carburetor identification numbers, only the portions underlined in the example below are used for registration.

BB 76J A KC ナ
 (A) (B)

Features of each type

• See the following table for the features of each type. (Items in brackets are optional)

Specifications		Model	GCV170A		GCV170LA			
		Type	S3DB	S3HB	A1A	G5B	G5BR	S3B
Crankshaft	25mm Ø X 140.9mm Straight		●	●				●
	22.2mm Ø X 105.6mm Straight					●	●	
	22.2mm Ø X 140.9mm Straight				●			
Flywheel brake			●	●	●			●
Control					●	●	●	

Specifications		Model	GCV200A		GCV200LA			
		Type	S3HE	S3LE	G5B	G5BR	S3C	S3L
Crankshaft	25mm Ø X 140.9mm Straight		●	●			●	●
	22.2mm Ø X 105.6mm Straight				●	●		
	22.2mm Ø X 140.9mm Straight							
Flywheel brake			●	●			●	●
Control					●	●		

1

Fuel hose, general purpose hoses and vinyl hose

- The standard part fuel hose, general purpose hose and vinyl hose may be substituted by the coiled bulk part.
- When ordering the standard part fuel hose, general purpose hose and vinyl hose use the bulk part number written in the parts catalog in brackets () underneath the part name.
- When exchanging the hose, cut and use at the specified length as mentioned in the part name.
(For the method of cutting the bulk part, and method of filling out orders etc., please refer to the instructions issued with the bulk part.)

Bulk part number of fuel hose, general purpose hose and vinyl hose.

Example: 9 5 0 0 1 - 7 5 0 0 1 - 5 0 M

Bulk part number:

Refers to the bulk part.

Marking code (fuel hose and general purpose hose)

Change code (Vinyl hose)

Indicates number mark or change sequence, however, the code for the bulk part must be strictly 0 (zero).

Types of code:

- | | | | | | |
|-------------|--|----------------|--|--------------|---|
| • Fuel hose | 2: Red outside braid
(3 mm inside dia. only) | • General hose | 1: Ash gray
2: Ash gray
3: Black
5: Black | • Vinyl hose | 1: Clear
2: Black
3: Light red
6: Light red
7: Pale black |
| | 5: Black inside braid | | | | |
| | 3: Red (3 mm inside dia. only) | | | | |
| | 4: Ash gray with red stripe
(3 mm inside dia. only) | | | | |
| | 6: Black | | | | |

Lengths:

- 001: 1 m (standard)
003: 3 m
008: 8 m } Application or specification of some parts is not settled.

I.D code: (fuel hose and general purpose hose)

- | | | | | |
|------------|--------------------|--------------------|-----------------------------|-----------------------------|
| 30: 3.0 mm | 50: 5.0 mm | 70: 7.0 mm | 11: 11 mm | 12: 12 (outside dia. 17) mm |
| 35: 3.5 mm | 55: 5.3 mm, 5.5 mm | 75: 7.3 mm, 7.5 mm | 91: 12 (outside dia. 15) mm | 14: 14 mm |
| 45: 4.5 mm | 65: 6.5 mm | 80: 8.0 mm | 92: 12 (outside dia. 16) mm | 17: 17 mm |

ID./OD. code: (vinyl hose)

- | | | | | |
|-------------------------|--------------------------|---------------------------|---------------------------|---------------------------|
| 01: ID. 2.9, OD. 6.8 mm | 12: ID. 5.0, OD. 7.0 mm | 21: ID. 8.0, OD. 9.0 mm | 37: ID. 11.0, OD. 15.0 mm | 50: ID. 16.0, OD. 19.0 mm |
| 03: ID. 3.0, OD. 6.0 mm | 10: ID. 5.0, OD. 8.0 mm | 23: ID. 8.0, OD. 12.0 mm | 38: ID. 12.0, OD. 13.0 mm | 55: ID. 17.5, OD. 20.5 mm |
| 05: ID. 3.5, OD. 6.5 mm | 11: ID. 5.0, OD. 9.0 mm | 25: ID. 9.0, OD. 11.0 mm | 39: ID. 12.0, OD. 14.0 mm | 60: ID. 22.0, OD. 27.0 mm |
| 07: ID. 4.0, OD. 7.0 mm | 14: ID. 6.0, OD. 9.0 mm | 27: ID. 9.0, OD. 13.0 mm | 40: ID. 12.0, OD. 16.0 mm | |
| 08: ID. 4.5, OD. 6.5 mm | 17: ID. 7.0, OD. 9.0 mm | 33: ID. 10.0, OD. 14.0 mm | 43: ID. 13.0, OD. 15.0 mm | |
| 09: ID. 4.5, OD. 8.0 mm | 19: ID. 7.0, OD. 11.0 mm | 36: ID. 11.0, OD. 13.0 mm | 45: ID. 14.0, OD. 18.0 mm | |

Hose type:

- 1: Fuel hose
3: Vinyl hose
5: General hose

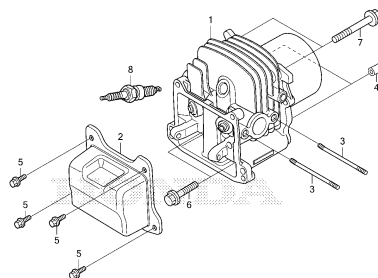
⊙ **CAUTION: It is DANGEROUS to confuse the fuel hose with the general purpose hose or vinyl hose.**

Never use a general purpose hose or vinyl hose in place of a fuel hose or vice versa. Always use the correct bulk part in the parts catalogue, according to the service manual or the instructions issued with the bulk part.

ENGINE GROUP

E-2

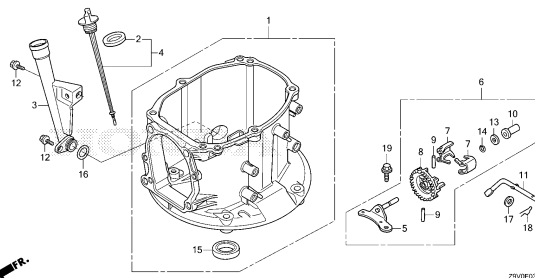
CYLINDER HEAD



ZV/VE0200

E-3

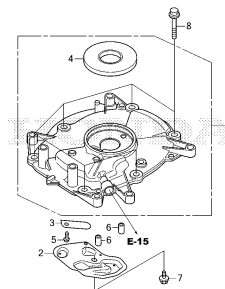
CRANKCASE



ZV/VE0300

E-6

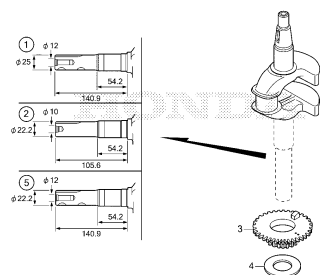
CRANKCASE COVER



ZV/VE0600

E-7

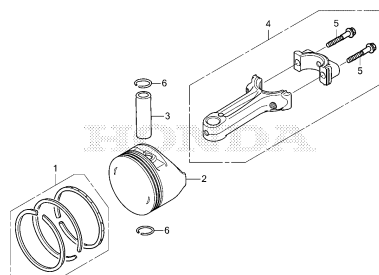
CRANKSHAFT



ZV/VE0700A

E-8

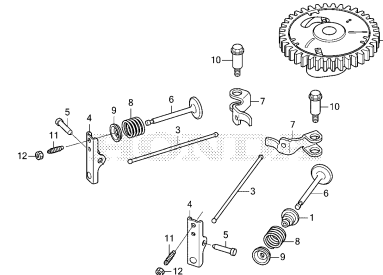
PISTON/CONNECTING ROD



ZV/VE0800

E-9

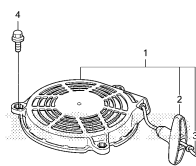
CAMSHAFT



ZV/VE0900

E-11

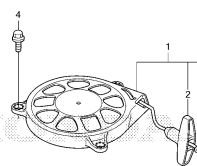
RECOIL STARTER(1)



ZV/VE1100

E-11-1

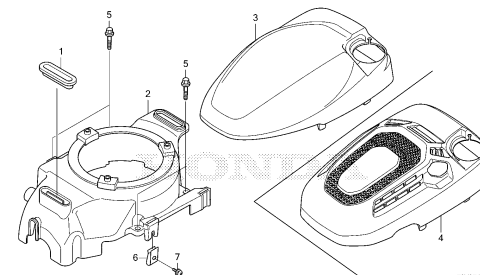
RECOIL STARTER(2)



ZV/VE1101

E-12

FAN COVER



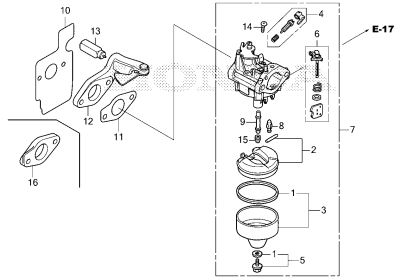
ZV/VE1200

2

ENGINE GROUP

E-14

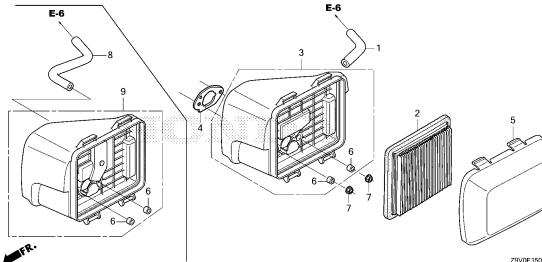
CARBURETOR



ZV/VE140A

E-15

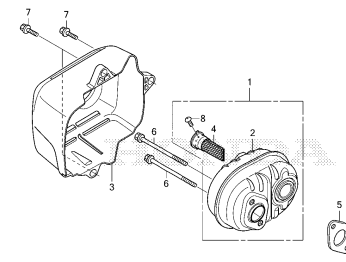
AIR CLEANER



ZV/VE150A

E-16

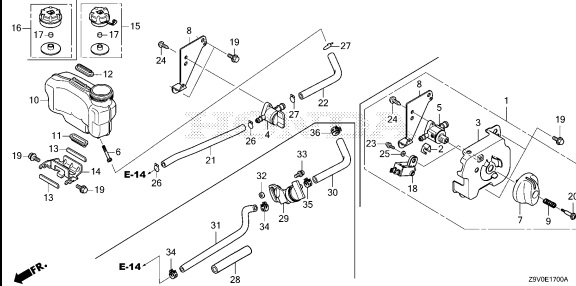
MUFFLER



ZV/VE160

E-17

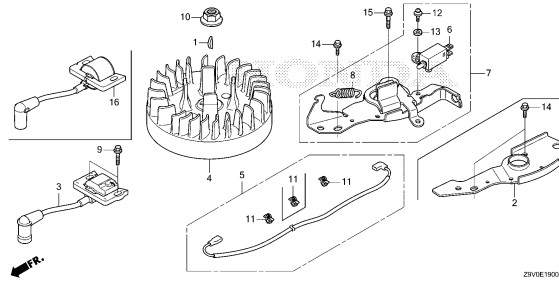
FUEL TANK



ZV/VE170A

E-19

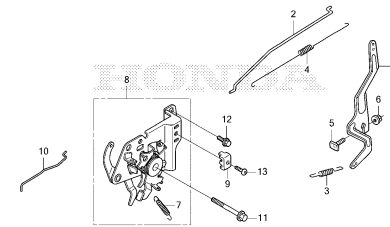
FLYWHEEL



ZV/VE190A

E-22

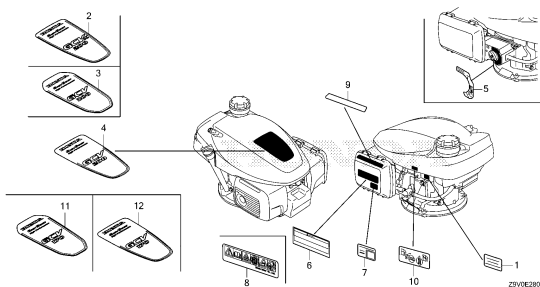
CONTROL



ZV/VE220A

E-28

LABEL

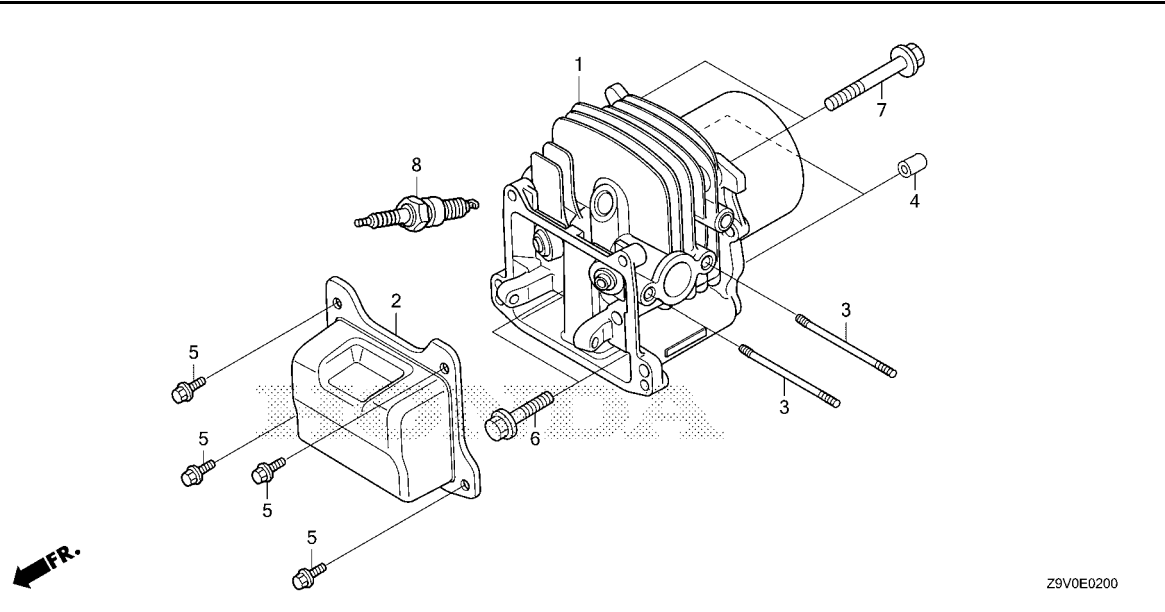


ZV/VE280A

2

E-2

CYLINDER HEAD



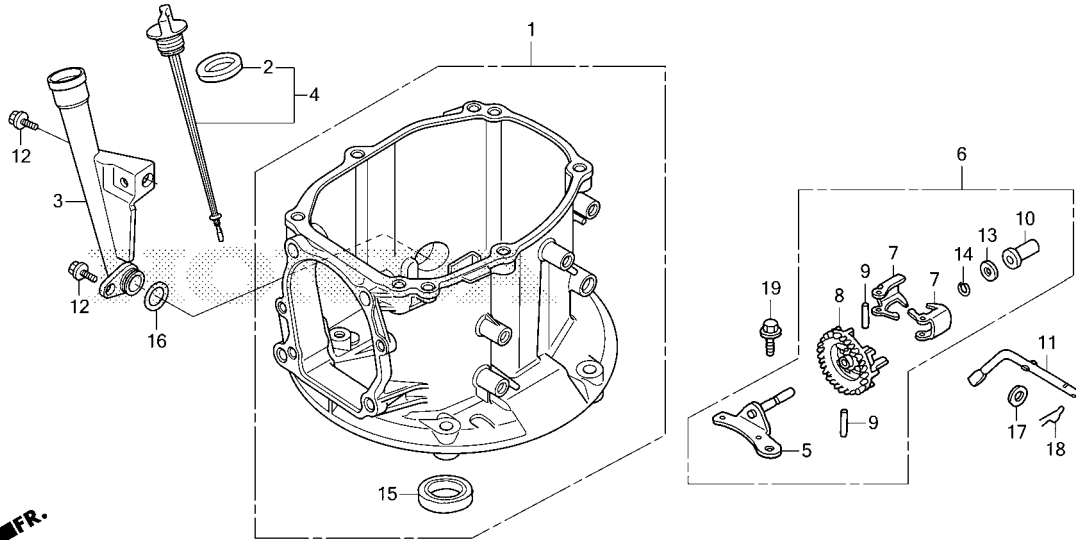
Ref. No. L.O.N. (Relative ref. Number) Description F.R.T.

Ref. No.	Part No.	Description	Reqd. QTY				Serial No.	Parts catalogue code
			GCV 170 A	GCV 170 LA	GCV 200 A	GCV 200 LA		
1	12100-Z9L-000	CYLINDER COMP.	1	1	-	-		
	12100-Z9L-405	1	1	-	-		
	12100-Z9M-000	-	-	1	1		
	12100-Z9M-405	-	-	1	1		
2	12311-Z9L-000	COVER, HEAD	1	1	1	1		
3	90043-Z9L-000	BOLT, STUD, 6X82(CT200)	2	2	2	2		
4	94301-08140	DOWEL PIN, 8X14	2	2	2	2		
5	95701-06014-08	BOLT, FLANGE, 6X14	4	4	4	4		
6	95701-08025-08	BOLT, FLANGE, 8X25	2	2	2	2		
7	95701-08040-08	BOLT, FLANGE, 8X40	2	2	2	2		
8	98079-55846	PLUG, SPARK(BPR5E5)(NGK)	1	1	1	1		



E-3

CRANKCASE



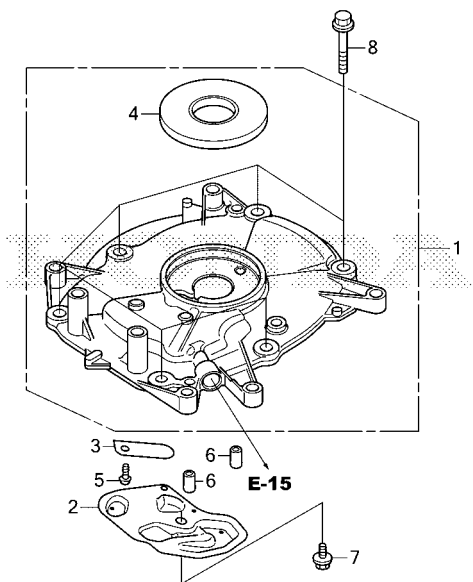
Ref. L.O.N. (Relative ref. Number) F.R.T.
No. Description

Ref. No.	Part No.	Description	Reqd. QTY				Serial No.	Parts catalogue code
			GCV 170 A	GCV 170 LA	GCV 200 A	GCV 200 LA		
1	11100-Z9L-010	CRANKCASE ASSY.....	1	1	1	1		
	11100-Z9L-415	1	1	1	1		
2	15625-ZE6-000	PACKING, OIL FILLER CAP.....	1	1	1	1		
3	15631-Z9L-000	EXTENSION, OIL FILLER.....	1	1	1	1		
4	15650-Z9L-000	GAUGE ASSY., OIL LEVEL.....	1	1	1	1		
5	16508-ZM0-010	SHAFT COMP., GOVERNOR HOLDER.....	1	1	1	1		
6	16510-ZM0-010	GOVERNOR ASSY.....	1	1	1	1		
7	16511-ZL8-000	WEIGHT, GOVERNOR.....	2	2	2	2		
8	16512-ZM0-000	HOLDER, GOVERNOR WEIGHT.....	1	1	1	1		
9	16513-ZE1-000	PIN, GOVERNOR WEIGHT.....	2	2	2	2		
10	16531-Z1T-000	SLIDER, GOVERNOR.....	1	1	1	1		
	16531-ZE1-000	1	1	1	1		
11	16541-Z9L-000	SHAFT, GOVERNOR ARM.....	1	1	1	1		
12	90013-ZL8-000	BOLT, FLANGE, 6X14(CT200).....	2	2	2	2		
13	90451-Z1T-000	WASHER, THRUST, 6MM.....	1	1	1	1		
	90451-ZE1-000	1	1	1	1		
14	90602-ZE1-000	CLIP, GOVERNOR HOLDER.....	1	1	1	1		
15	91202-Z9L-003	OIL SEAL, 28X41.25X6.....	1	1	1	1		
16	91301-Z9L-000	O-RING, 19.1X2.2.....	1	1	1	1		
17	94101-06800	WASHER, PLAIN, 6MM.....	1	1	1	1		
18	94251-08000	PIN, LOCK, 8MM.....	1	1	1	1		
19	95701-06014-08	BOLT, FLANGE, 6X14.....	1	1	1	1		

2

E-6

CRANKCASE COVER



Z9V0E0600

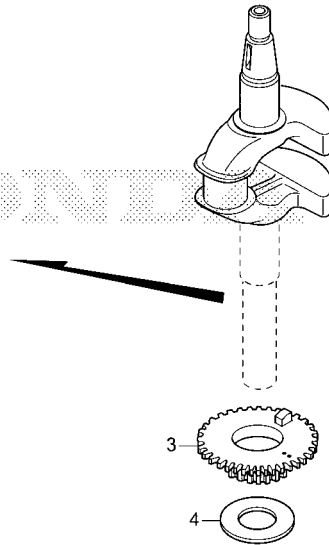
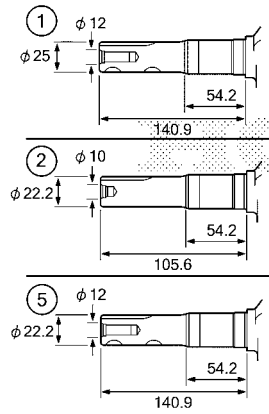
Ref. L.O.N. (Relative ref. Number) F.R.T.
No. Description

Ref. No.	Part No.	Description	Reqd. QTY				Serial No.	Parts catalogue code
			GCV 170 A	GCV 170 LA	GCV 200 A	GCV 200 LA		
1	11300-Z9L-405	COVER ASSY., CRANKCASE	1	1	1	1		
2	12356-Z9L-000	COVER, BREATHER	1	1	1	1		
3	12377-Z9L-000	PLATE, VALVE	1	1	1	1		
4	91201-Z9V-003	OIL SEAL, 25.4X62X6 (FREUDENBERG-NOK)	1	1	1	1		
5	93500-05008-0A	SCREW, PAN, 5X8	1	1	1	1		
6	94301-08140	DOWEL PIN, 8X14	2	2	2	2		
7	95701-06014-08	BOLT, FLANGE, 6X14	1	1	1	1		
8	95701-08025-08	BOLT, FLANGE, 8X25	6	6	6	6		



E-7

CRANKSHAFT



Z9V0E0700A

Ref. No. L.O.N. (Relative ref. Number) Description F.R.T.

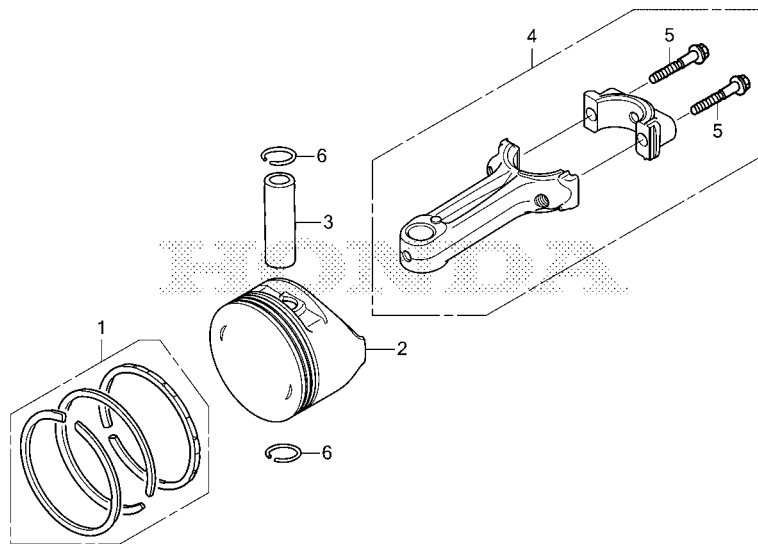
Ref. No.	Part No.	Description	Reqd. QTY				Serial No.	Parts catalogue code
			GCV 170 A	GCV 170 LA	GCV 200 A	GCV 200 LA		
1	13311-Z9L-000	CRANKSHAFT(N3-TYPE).....	1	1	1	1	-----	S3B,S3C,S3DB,S3HB,S3HE,S3L,S3LE
2	13311-Z9L-850	CRANKSHAFT(N5-TYPE).....	-	1	-	1	-----	G5B,G5BR
3	14311-Z9L-000	GEAR, TIMING.....	1	1	1	1		
4	90402-Z9L-000	WASHER, THRUST.....	1	1	1	1		
5	13311-Z9L-810	CRANKSHAFT(N1-TYPE).....	-	1	-	-	-----	A1A

FR.

2

E-8

PISTON/CONNECTING ROD



Z9V0E0800

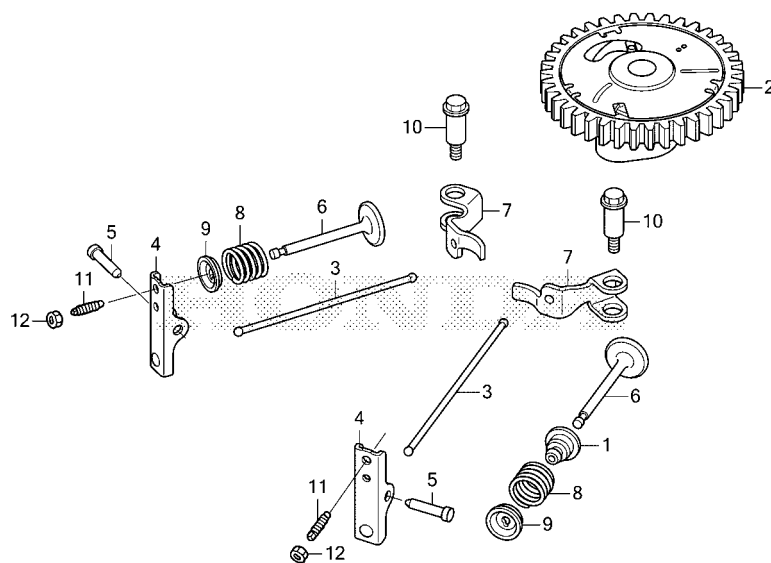
Ref. No.	L.O.N.	(Relative ref. Number) Description	F.R.T.
----------	--------	------------------------------------	--------

Ref. No.	Part No.	Description	Reqd. QTY				Serial No.	Parts catalogue code
			GCV 170 A	GCV 170 LA	GCV 200 A	GCV 200 LA		
1	13010-Z9L-003	RING SET, PISTON.....	1	1	-	-		
	13010-Z9M-003	-	-	1	1		
2	13101-Z9L-000	PISTON.....	1	1	-	-		
	13101-Z9M-000	-	-	1	1		
3	13111-Z8B-000	PIN, PISTON.....	1	1	1	1		
4	13200-Z9L-000	ROD ASSY., CONNECTING.....	1	1	1	1		
5	90001-Z1L-000	BOLT, CONNECTING ROD.....	2	2	2	2		
6	90551-ZE0-000	CLIP, PISTON PIN, 13MM.....	2	2	2	2		



E-9

CAMSHAFT



Z9V0E0900

Ref. L.O.N. (Relative ref. Number) F.R.T.
No. Description

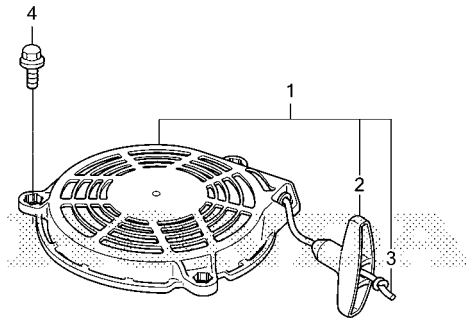
Ref. No.	Part No.	Description	Reqd. QTY				Serial No.	Parts catalogue code
			GCV 170 A	GCV 170 LA	GCV 200 A	GCV 200 LA		
1	12209-Z8B-003	SEAL, VALVE STEM.....	1	1	1	1		
2	14100-Z9L-000	CAMSHAFT ASSY.....	1	1	-	-		
	14100-Z9M-000	-	-	1	1		
3	14410-Z9L-000	ROD, PUSH.....	2	2	2	2		
4	14431-Z9L-000	ARM, VALVE ROCKER.....	2	2	2	2		
5	14461-Z9L-000	SHAFT, ROCKER ARM.....	2	2	2	2		
6	14711-Z9L-000	VALVE, IN.....	2	2	2	2		
7	14731-Z9L-000	LIFTER, VALVE.....	2	2	2	2		
8	14751-ZL8-000	SPRING, VALVE.....	2	2	2	2		
9	14771-Z0J-000	RETAINER, VALVE SPRING.....	2	2	2	2		
10	90001-Z9L-000	BOLT, SHOULDER, 6MM.....	2	2	2	2		
11	90012-333-000	SCREW, TAPPET ADJUSTING.....	2	2	2	2		
	90012-ZCJ-000	2	2	2	2		
12	90206-001-000	NUT, TAPPET ADJUSTING.....	2	2	2	2		
	90206-Z6L-000	2	2	2	2		

2

FR.

E-11

RECOIL STARTER(1)



Z9V0E1100

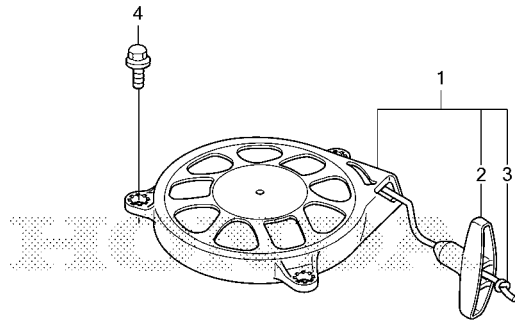
Ref. No. L.O.N. (Relative ref. Number) Description F.R.T.

Ref. No.	Part No.	Description	Reqd. QTY				Serial No.	Parts catalogue code
			GCV 170 A	GCV 170 LA	GCV 200 A	GCV 200 LA		
1	28400-Z9V-014	STARTER ASSY., RECOIL (LONG ROPE)	1	1	-	-	-----	A1A, S3B, S3DB, S3HB
	28400-Z9V-004	-	-	1	1	-----	S3C, S3HE, S3L, S3LE
2	28461-ZL8-003	GRIP, STARTER.....	1	1	1	1	-----	A1A, S3B, S3C, S3DB, S3HB, S3HE, S3L, S3LE
3	28462-ZL8-V71	ROPE, RECOIL STARTER (LONG TYPE)	1	1	1	1	-----	A1A, S3B, S3C, S3DB, S3HB, S3HE, S3L, S3LE
4	95701-06014-08	BOLT, FLANGE, 6X14.....	3	3	3	3	-----	A1A, S3B, S3C, S3DB, S3HB, S3HE, S3L, S3LE



E-11-1

RECOIL STARTER(2)



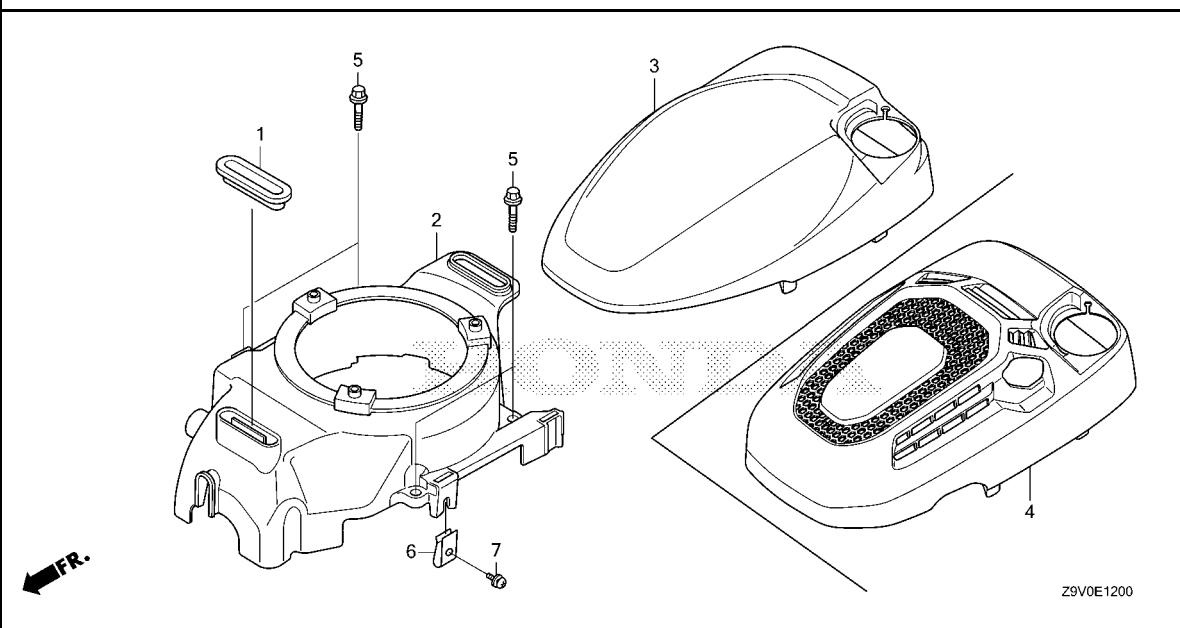
Z9V0E1101

Ref. No.	L.O.N.	(Relative ref. Number) Description	F.R.T.
----------	--------	------------------------------------	--------

Ref. No.	Part No.	Description	Reqd. QTY				Serial No.	Parts catalogue code
			GCV 170 A	GCV 170 LA	GCV 200 A	GCV 200 LA		
1	28400-Z9W-013	STARTER ASSY., RECOIL (SHORT ROPE)	-	1	-	-	-----	G5B,G5BR
	28400-Z9W-003	-	-	-	1	-----	G5B,G5BR
2	28461-ZL8-003	GRIP, STARTER.....	-	1	-	1	-----	G5B,G5BR
3	28462-ZL8-003	ROPE, RECOIL STARTER.....	-	1	-	1	-----	G5B,G5BR
4	95701-06014-08	BOLT, FLANGE, 6X14.....	-	3	-	3	-----	G5B,G5BR

E-12

FAN COVER



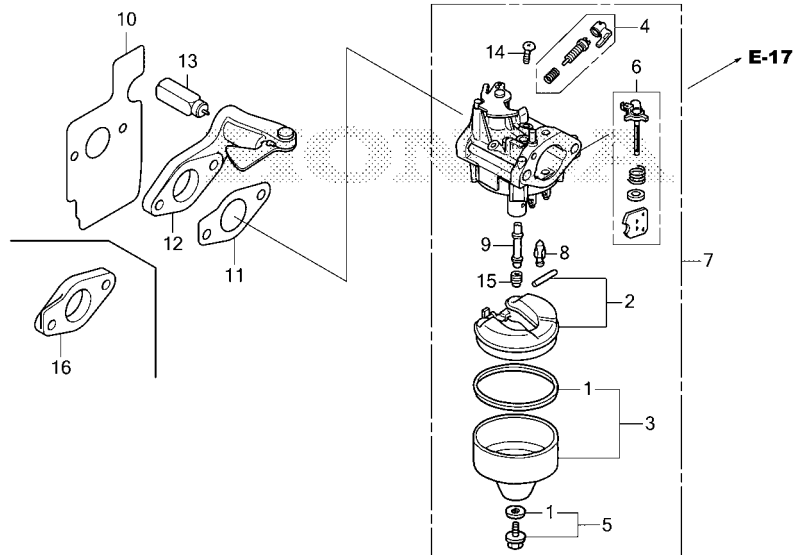
Ref. No. L.O.N. (Relative ref. Number) Description F.R.T.

Ref. No.	Part No.	Description	Reqd. QTY				Serial No.	Parts catalogue code
			GCV 170 A	GCV 170 LA	GCV 200 A	GCV 200 LA		
1	17532-Z9L-000	RUBBER A, TANK MOUNTING.....	1	1	1	1		
2	19610-Z9R-000	COVER COMP., FAN.....	1	1	1	1		
3	19721-Z9L-800ZA	COVER, TOP						
		NH1.....BLACK	1	1	1	1	-----	A1A,S3B,S3C,S3HB,S3HE
	19721-Z9L-800ZB	*T98*.....MTD RED	-	1	-	1	-----	S3B,S3C
	19721-Z9L-800ZC	*T89*.....CRAFTSMAN RED	-	1	-	-	-----	S3B
	19721-Z9L-800ZD	*T104*.....RYOBI GREEN	-	1	-	-	-----	S3B
4	19721-Z9W-010ZC	COVER, TOP						
		T104.....RYOBI GREEN	-	1	-	1	-----	G5B
	19721-Z9W-010ZE	*NH1*.....BLACK	-	1	-	1	-----	G5B
	19721-Z9W-801ZA	*R280*.....POWER RED	-	1	-	1	-----	G5BR
	19721-Z9W-801ZB	*NH1*.....BLACK	-	1	-	1	-----	G5BR
	19721-Z9W-010ZB	*T89*.....CRAFTSMAN RED	-	1	-	-	-----	G5B
	19721-Z9W-010ZD	*R280*.....POWER RED	-	1	-	-	-----	G5B
	19721-Z9W-010ZA	*T98*.....MTD RED	-	-	-	1	-----	G5B
5	90018-ZE1-000	BOLT, FLANGE, 6X23(CT200)....	4	4	4	4		
6	90320-GC3-000	NUT, SPRING, 5MM.....	1	1	1	1		
7	93891-05008-07	SCREW-WASHER, 5X8.....	1	1	1	1		



E-14

CARBURETOR



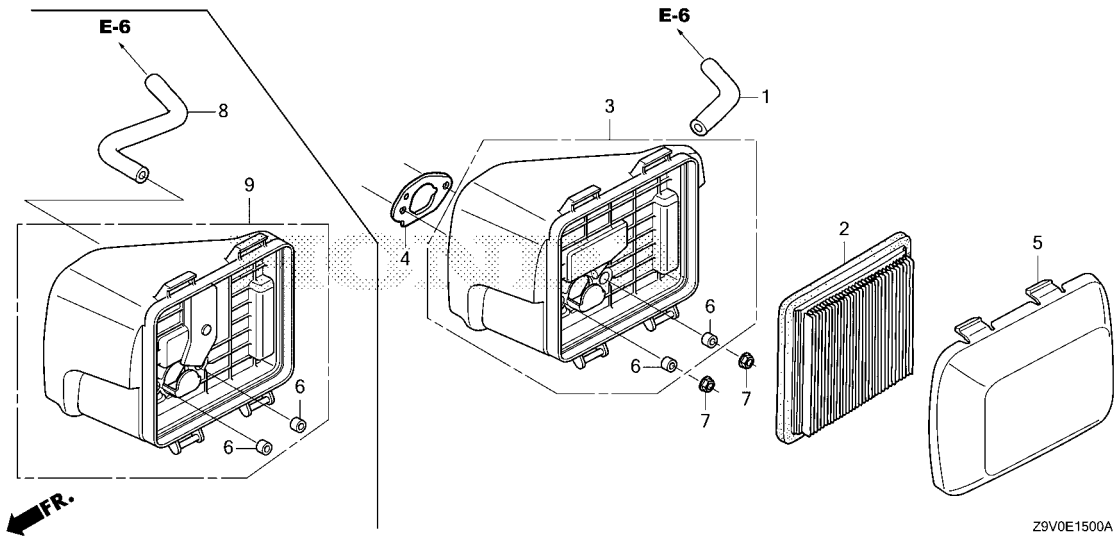
Ref. No. L.O.N. (Relative ref. Number) Description F.R.T.

Ref. No.	Part No.	Description	Reqd. QTY				Serial No.	Parts catalogue code
			GCV 170 A	GCV 170 LA	GCV 200 A	GCV 200 LA		
1	16010-Z9L-811	GASKET SET	1	1	1	1		
2	16013-ZL1-003	FLOAT SET	1	1	1	1		
3	16015-Z9L-811	CHAMBER SET, FLOAT	1	1	1	1		
4	16016-ZG0-W00	SCREW SET	1	1	-	-		
	16016-Z9M-811	-	-	1	1		
5	16028-ZE0-005	SCREW SET	1	1	1	1		
6	16044-Z9L-811	CHOKE SET	1	1	-	-	----- G5B, G5BR, S3B, S3DB, S3HB	
	16044-Z9L-801	-	1	-	-	----- A1A	
	16044-Z9M-811	-	-	1	1		
7	16100-Z9L-811	CARBURETOR ASSY. (BB76J A)	1	1	-	-	----- G5B, G5BR, S3B, S3DB, S3HB	
	16100-Z9L-801	CARBURETOR ASSY. (BB76K A)	-	1	-	-	----- A1A	
	16100-Z9M-811	CARBURETOR ASSY. (BB76G A)	-	-	1	1		
8	16155-ZM0-013	VALVE, FLOAT	1	1	1	1		
9	16166-Z9L-811	NOZZLE, MAIN	1	1	-	-		
	16166-Z9M-811	-	-	1	1		
10	16212-Z9L-000	PACKING, INSULATOR	1	1	1	1		
11	16221-Z9L-000	PACKING, CARBURETOR	1	1	1	1		
12	16600-Z9L-000	CONTROL ASSY., CHOKE	1	1	1	1	----- G5B, G5BR, S3B, S3C, S3DB, S3HB, S3HE, S3L, S3LE	
13	16620-Z9L-003	THERMOWAX ASSY.	1	1	1	1	----- G5B, G5BR, S3B, S3C, S3DB, S3HB, S3HE, S3L, S3LE	
14	93500-05006-1H	SCREW, PAN, 5X6	1	1	1	1		
15	99101-124-0650	JET, MAIN, #65	(1)	(1)	(1)	(1)		
	99101-124-0620	JET, MAIN, #62	(1)	(1)	-	-		
	99101-124-0680	JET, MAIN, #68	1	1	-	-		
			-	-	(1)	(1)		
	99101-124-0700	JET, MAIN, #70	-	-	1	1		
16	16211-Z9L-800	INSULATOR, CARBURETOR	-	1	-	-	----- A1A	

Z9V0E1400A

E-15

AIR CLEANER



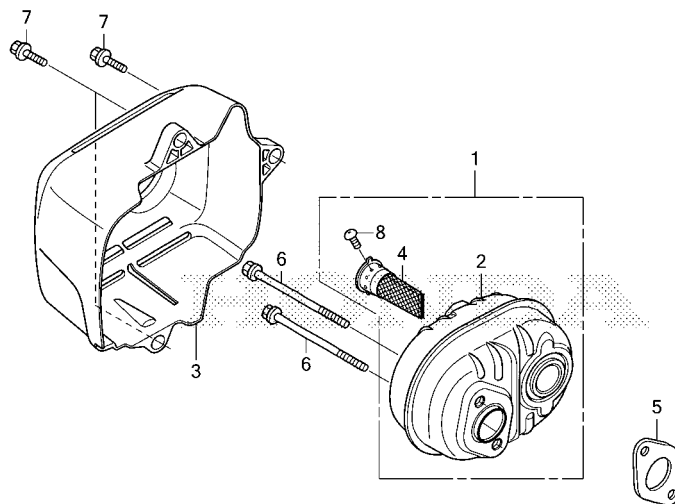
Ref. L.O.N. (Relative ref. Number) F.R.T.
 No. Description

Ref. No.	Part No.	Description	Reqd. QTY				Serial No.	Parts catalogue code
			GCV 170 A	GCV 170 LA	GCV 200 A	GCV 200 LA		
1	15721-Z9L-000	TUBE, BREATHER	1	1	1	1	-----	G5B,G5BR,S3B,S3C,S3DB,S3HB,S3HE,S3L,S3LE
2	17211-Z8B-901	ELEMENT, AIR CLEANER (WIX FILTERS)	1	1	1	1	-----	G5B,G5BR,S3B,S3C,S3DB,S3HB,S3HE,S3L,S3LE
3	17220-Z9V-000	CASE COMP., AIR CLEANER	1	1	1	1	-----	G5B,G5BR,S3B,S3C,S3DB,S3HB,S3HE,S3L,S3LE
4	17228-Z9L-000	PACKING, AIR CLEANER	1	1	1	1		
5	17231-Z9L-000	COVER, AIR CLEANER	1	1	1	1		
6	17238-Z9L-300	COLLAR, AIR CLEANER	2	2	2	2		
	17238-ZG9-M00	2	2	2	2		
7	94050-06000	NUT, FLANGE, 6MM	2	2	2	2		
8	15721-Z9L-800	TUBE, BREATHER	-	1	-	-	-----	A1A
9	17220-Z9L-800	CASE COMP., AIR CLEANER	-	1	-	-	-----	A1A



E-16

MUFFLER



Z9V0E1600

Ref. No.	L.O.N.	(Relative ref. Number) Description	F.R.T.
----------	--------	------------------------------------	--------

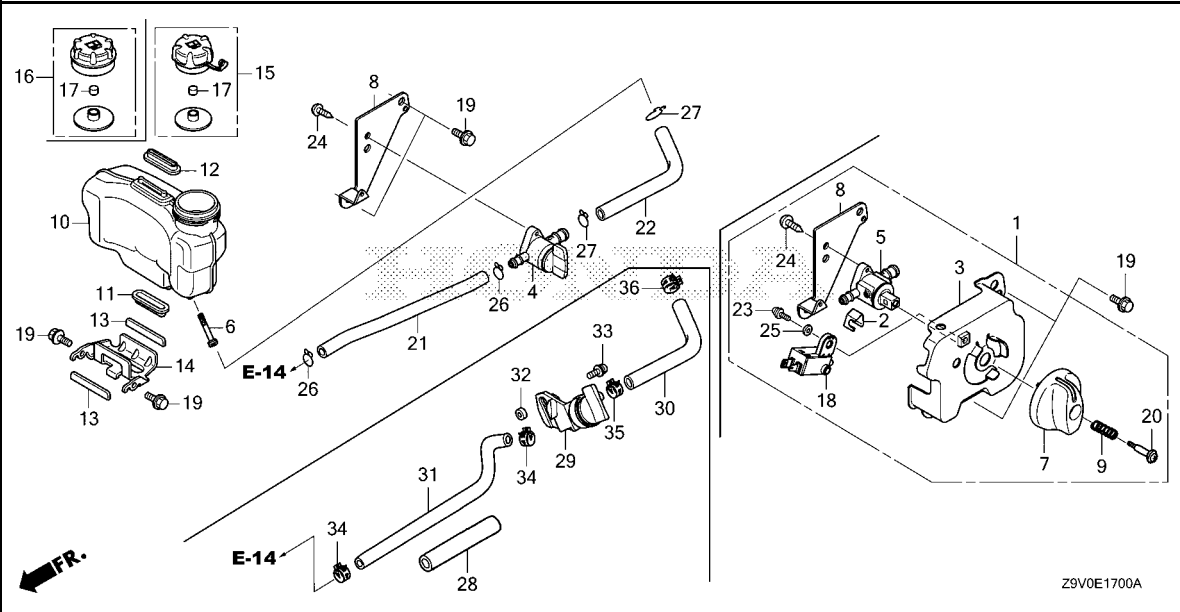
Ref. No.	Part No.	Description	Reqd. QTY				Serial No.	Parts catalogue code
			GCV 170 A	GCV 170 LA	GCV 200 A	GCV 200 LA		
1	18300-Z9L-800	MUFFLER ASSY.(ARRESTER).....	(1)	(1)	(1)	(1)		
2	18310-Z9L-000	MUFFLER COMP.	1	1	1	1		
3	18320-Z9L-000	PROTECTOR COMP., MUFFLER.....	1	1	1	1		
4	18350-Z9L-000	ARRESTER COMP., SPARK.....	(1)	(1)	(1)	(1)		
5	18381-ZL8-305	GASKET, MUFFLER.....	(1)	(1)	(1)	(1)		
6	90004-ZL8-000	BOLT, FLANGE, 6X79(CT200)....	2	2	2	2		
7	90018-ZE1-000	BOLT, FLANGE, 6X23(CT200)....	3	3	3	3		
8	90055-ZE1-000	SCREW, TAPPING, 4X6.....	(1)	(1)	(1)	(1)		

2

FR.

E-17

FUEL TANK



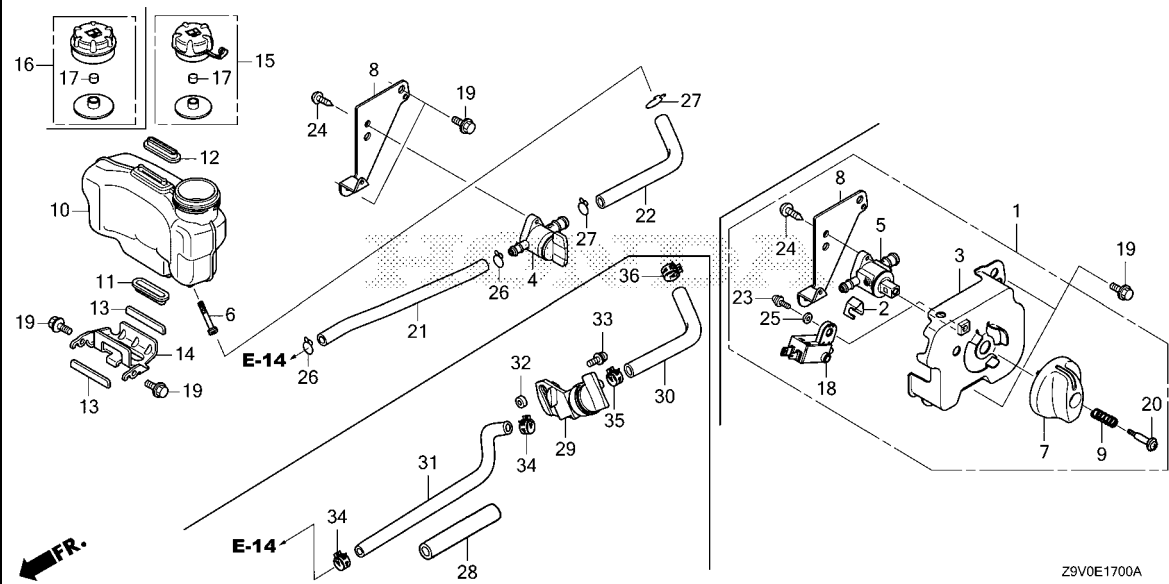
Ref. No. L.O.N. (Relative ref. Number) Description F.R.T.

Ref. No.	Part No.	Description	Reqd. QTY				Serial No.	Parts catalogue code
			GCV 170 A	GCV 170 LA	GCV 200 A	GCV 200 LA		
1	16500-Z9W-010	CONTROL ASSY.	-	1	-	1	----- G5B, G5BR	
2	16534-Z9W-000	PLATE, SPRING	-	1	-	1	----- G5B, G5BR	
3	16591-Z9W-000	COVER, CONTROL	-	1	-	1	----- G5B, G5BR	
4	16950-Z0Y-003	COCK ASSY., FUEL	1	1	1	1	----- S3B, S3C, S3DB, S3HB, S3HE, S3L, S3LE	
5	16950-Z9W-013	COCK ASSY., FUEL	-	1	-	1	----- G5B, G5BR	
6	16952-Z8B-000	STRAINER, FUEL	1	1	1	1		
7	16959-Z9W-010	KNOB, COCK CONTROL	-	1	-	1	----- G5B, G5BR	
8	16961-Z9L-000	STAY, FUEL COCK	1	1	1	1	----- G5B, G5BR, S3B, S3C, S3DB, S3HB, S3HE, S3L, S3LE	
9	16964-Z9W-000	SPRING, COCK KNOB	-	1	-	1	----- G5B, G5BR	
10	17511-Z9L-800	TANK, FUEL	1	-	1	-		
	17511-Z9L-000	-	1	-	1		
11	17532-Z9L-000	RUBBER A, TANK MOUNTING	1	1	1	1		
12	17532-Z9L-000	RUBBER A, TANK MOUNTING	1	1	1	1	----- A1A, S3B, S3C, S3DB, S3HB, S3HE, S3L, S3LE	
	17532-Z9W-000	-	1	-	1	----- G5B, G5BR	
13	17533-Z9L-000	RUBBER B, TANK MOUNTING	2	2	2	2		
14	17561-Z9L-000	STAY, FUEL TANK	1	1	1	1		
15	17620-Z9L-010	CAP ASSY., FUEL TANK	-	1	-	1		
16	17620-Z9L-800	CAP ASSY., FUEL TANK	1	-	1	-		
17	17622-888-010	SPONGE, FUEL CAP BREATHER	1	1	1	1		
18	35120-Z9L-811	SWITCH ASSY., ENGINE STOP	-	1	-	1	----- G5B, G5BR	
19	90014-952-000	BOLT, FLANGE, 6X14(CT200)	4	2	4	4	----- A1A, G5B, G5BR, S3C, S3DB, S3HB, S3HE, S3L, S3LE	
			-	4	-	-	----- G5B, G5BR, S3B	
20	90105-ZT3-000	SCREW, PAN, 4X19	-	1	-	1	----- G5B, G5BR	
21	95001-45112-40	TUBE, FUEL	1	-	1	-		
	91424-Z8B-901	TUBE, FUEL, 4.5X110	-	1	-	1	----- G5B, G5BR, S3B, S3C, S3L	



E-17

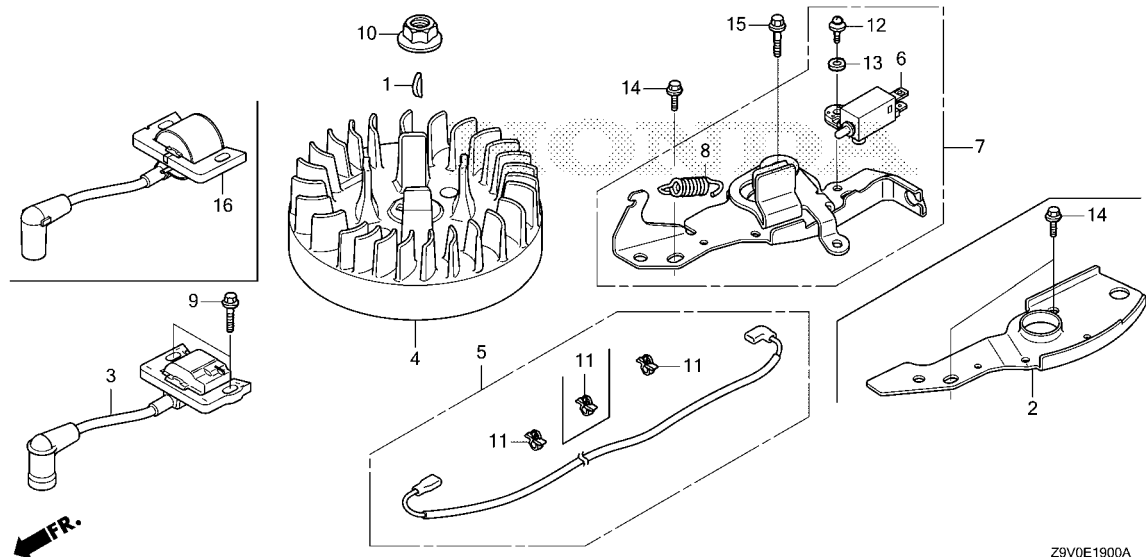
FUEL TANK



Ref. No.	Part No.	Description	Reqd. QTY				Serial No.	Parts catalogue code
			GCV 170 A	GCV 170 LA	GCV 200 A	GCV 200 LA		
22	95001-75160-40	TUBE, FUEL, 7.3X160 (95001-75001-60M)	1	-	1	-		
	91427-Z8B-901	TUBE, FUEL, 7.3X160	-	1	-	1	-----	G5B,G5BR,S3B,S3C,S3L
23	93892-04012-00	SCREW-WASHER, 4X12	-	1	-	1	-----	G5B,G5BR
24	93913-25220	SCREW, TAPPING, 5X12(PO)	1	1	1	1	-----	G5B,G5BR,S3B,S3C,S3DB,S3HB,S3HE,S3L,S3LE
25	94103-04000	WASHER, PLAIN, 4MM	-	1	-	1	-----	G5B,G5BR
26	95002-02080	CLIP, TUBE(B8)	2	-	2	-		
	95002-50000	CLIP, TUBE(C9)	-	2	-	2	-----	G5B,G5BR,S3B,S3C,S3L
27	95002-02120	CLIP, TUBE(B12)	2	-	2	-		
	95002-02130	CLIP, TUBE(B12.5)	-	2	-	2	-----	G5B,G5BR,S3B,S3C,S3L
28	16854-ZH8-000	RUBBER, SUPPORTER(107MM)	-	1	-	-	-----	A1A
29	16950-ZM0-003	COCK ASSY., FUEL	-	1	-	-	-----	A1A
30	17701-Z9L-812	TUBE, FUEL TANK(FKM)	-	1	-	-	-----	A1A
31	17702-Z8B-802	TUBE, FUEL(FKM)	-	1	-	-	-----	A1A
32	91501-Z0L-800	COLLAR, FUEL COCK	-	1	-	-	-----	A1A
33	93891-05010-08	SCREW-WASHER, 5X10	-	1	-	-	-----	A1A
34	95002-40800-08	CLAMP, TUBE(D8)	-	2	-	-	-----	A1A
35	95002-41000-08	CLAMP, TUBE(D10)	-	1	-	-	-----	A1A
36	95002-41200-08	CLAMP, TUBE(D12)	-	1	-	-	-----	A1A

E-19

FLYWHEEL



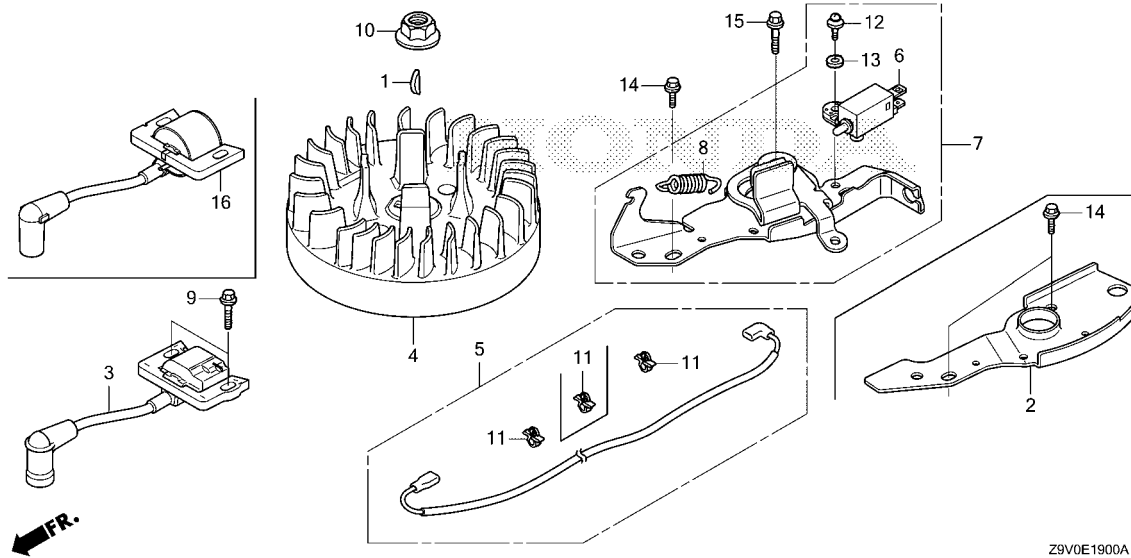
Ref. L.O.N. (Relative ref. Number) F.R.T.
No. Description

Ref. No.	Part No.	Description	Reqd. QTY				Serial No.	Parts catalogue code
			GCV 170 A	GCV 170 LA	GCV 200 A	GCV 200 LA		
1	13331-Z8B-900	KEY, SPECIAL WOODRUFF, 25X18	1	1	1	1		
2	19612-Z9L-000	PLATE, SIDE	-	1	-	1	G5B, G5BR	
3	30500-Z9L-004	COIL ASSY., IGNITION	(1)	(1)	(1)	(1)		
4	31110-Z9L-013	FLYWHEEL COMP.	1	1	1	1	A1A, G5B, G5BR, S3C, S3DB, S3HB, S3HE, S3L, S3LE	
	31110-Z9V-801		-	1	-	-	G5B, G5BR	
	31110-Z9V-003		-	1	-	-	S3B	
	31110-Z9V-801		-	-	-	1	G5B	
	31110-Z9L-801		-	-	-	1	G5BR	
5	32195-Z9V-010	CORD, STOP SWITCH	1	1	-	-	A1A, S3B, S3DB, S3HB	
	32195-Z9V-801		-	1	-	-	G5B, G5BR	
	32195-Z9V-000		-	-	1	1	S3C, S3HE, S3L, S3LE	
	32195-Z9V-800		-	-	-	1	G5B, G5BR	
6	35120-Z9L-811	SWITCH ASSY., ENGINE STOP	1	1	1	1	A1A, S3B, S3C, S3DB, S3HB, S3HE, S3L, S3LE	
7	75100-Z9V-000	BRAKE ASSY.	1	1	1	1	A1A, S3B, S3C, S3DB, S3HB, S3HE, S3L, S3LE	
8	75113-Z9L-020	SPRING, BRAKE LEVER	1	1	1	1	A1A, S3B, S3C, S3DB, S3HB, S3HE, S3L, S3LE	
9	90018-ZE1-000	BOLT, FLANGE, 6X23(CT200)	2	2	2	2		
10	90213-Z9L-000	NUT, FLANGE, 14MM	1	1	1	1		
11	91541-S0A-003	CLIP, HARNESS BAND(BLACK) (145MM)	3	2	3	-	G5B, G5BR, S3DB, S3HB, S3HE, S3LE	
			-	3	-	-	A1A, S3B	
			-	-	-	2	G5B, G5BR	
			-	-	-	3	S3C, S3L	
12	93892-04012-00	SCREW-WASHER, 4X12	1	1	1	1	A1A, S3B, S3C, S3DB, S3HB, S3HE, S3L, S3LE	
13	94103-04000	WASHER, PLAIN, 4MM	1	1	1	1	A1A, S3B, S3C, S3DB, S3HB, S3HE, S3L, S3LE	



E-19

FLYWHEEL

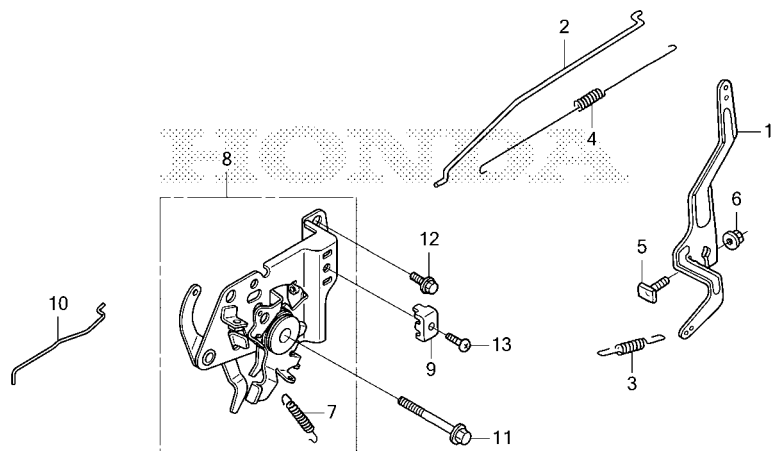


Ref. No.	Part No.	Description	Reqd. QTY				Serial No.	Parts catalogue code
			GCV 170 A	GCV 170 LA	GCV 200 A	GCV 200 LA		
14	95701-06014-08	BOLT, FLANGE, 6X14	1	1	1	-	-----	A1A,S3B,S3DB,S3HB,S3HE,S3LE
			-	2	-	2	-----	G5B,G5BR
			-	-	-	1	-----	S3C,S3L
15	95701-06022-08	BOLT, FLANGE, 6X22	1	1	1	1	-----	A1A,S3B,S3C,S3DB,S3HB,S3HE,S3L,S3LE
16	30500-Z9V-003	COIL ASSY., IGNITION	-	1	-	-	-----	S3B

2

E-22

CONTROL



FR.

Z9V0E2200A

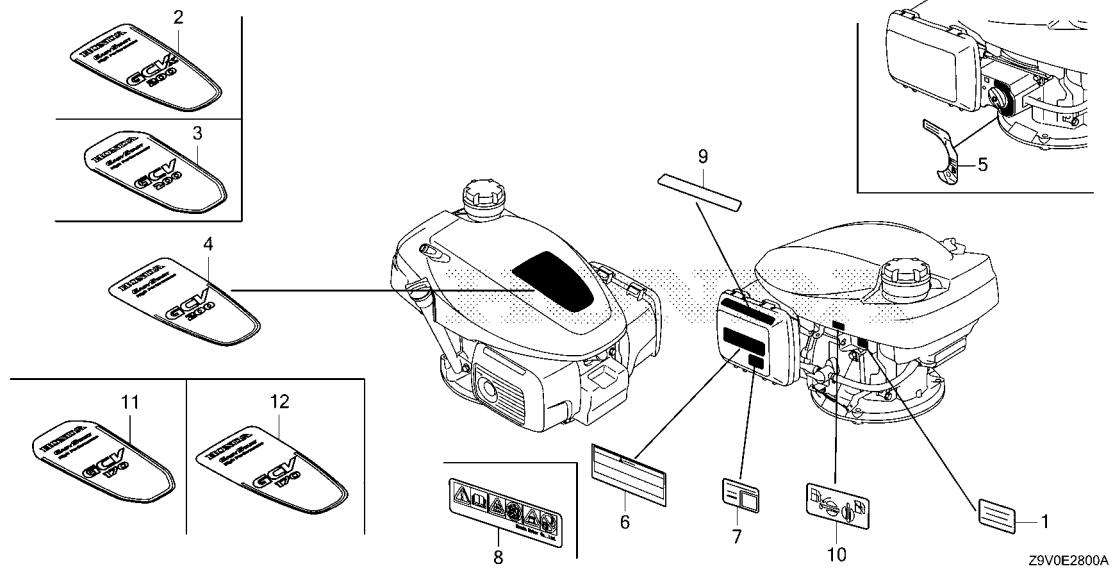
Ref. L.O.N. (Relative ref. Number) F.R.T.
No. Description

Ref. No.	Part No.	Description	Reqd. QTY				Serial No.	Parts catalogue code
			GCV 170 A	GCV 170 LA	GCV 200 A	GCV 200 LA		
1	16551-Z9L-000	ARM, GOVERNOR	1	1	1	1		
2	16555-Z9L-000	ROD, GOVERNOR	1	1	1	1		
3	16561-Z9P-000	SPRING, GOVERNOR	1	1	1	1	-----	A1A, S3B, S3C, S3DB, S3HB, S3HE, S3L, S3LE
	16561-Z9W-000	-	1	-	1	-----	G5B, G5BR
4	16562-Z9L-000	SPRING, THROTTLE RETURN	1	1	1	1		
5	90015-ZE5-010	BOLT, GOVERNOR ARM	1	1	1	1		
6	94050-06000	NUT, FLANGE, 6MM	1	1	1	1		
7	16576-ZE7-300	SPRING, LEVER	-	1	-	-	-----	A1A
8	16580-Z9L-820	BASE COMP., CONTROL	-	1	-	-	-----	A1A
9	16617-VG3-000	HOLDER, CABLE	-	1	-	-	-----	A1A
10	16674-Z9L-800	ROD, CHOKE	-	1	-	-	-----	A1A
11	90014-888-000	BOLT, FLANGE, 6X50(CT200)	-	1	-	-	-----	A1A
12	90014-952-000	BOLT, FLANGE, 6X14(CT200)	-	1	-	-	-----	A1A
13	93500-05016-0A	SCREW, PAN, 5X16	-	1	-	-	-----	A1A

2

E-28

LABEL



Ref. L.O.N. (Relative ref. Number) F.R.T.
No. Description

Ref. No.	Part No.	Description	Reqd. QTY				Serial No.	Parts catalogue code
			GCV 170 A	GCV 170 LA	GCV 200 A	GCV 200 LA		
1	87114-ZH7-840	LABEL, WARNING (NOT CERTIFIED FOR SALE)	1	-	1	-		
	87114-ZH7-860	-	1	-	1		
2	87169-Z9M-000	MARK, TOP COVER.....	-	-	1	-	----- S3HE	
3	87169-Z9W-000	MARK, TOP COVER.....	-	-	-	1	----- G5B,G5BR	
4	87169-Z9W-800	MARK, TOP COVER.....	-	-	-	1	----- S3C	
5	87501-Z9W-000	MARK, ENGINE SWITCH.....	-	1	-	1	----- G5B,G5BR	
6	87516-Z9V-800	MARK, OPERATOR CAUTION.....	-	1	-	1	----- A1A,G5B,G5BR,S3B	
	87516-Z9V-000	-	1	-	1		
7	87518-Z9L-000	LABEL, QR CODE(SERVICE).....	1	-	1	-		
8	87519-Z9L-000	LABEL, OPERATOR CAUTION.....	1	-	1	-		
9	87529-Z9R-000	MARK, AUTO CHOKE.....	1	-	1	-		
10	87592-Z9L-000	MARK, FUEL COCK.....	1	1	1	1	----- A1A,S3B,S3C,S3DB,S3HB,S3HE,S3L,S3LE	
11	87169-Z9V-000	MARK, TOP COVER.....	-	1	-	-	----- G5B,G5BR	
12	87169-Z9V-800	MARK, TOP COVER.....	-	1	-	-	----- A1A,S3B	



PART NO. INDEX

Part Number	Page	Ref.	Part Number	Page	Ref.	Part Number	Page	Ref.	Part Number	Page	Ref.	Part Number	Page	Ref.
11000			16044-Z9L-801	20	6	17561-Z9L-000	23	14	32195-Z9V-800	25	5	91000		
			16044-Z9L-811	20	6	17620-Z9L-010	23	15	32195-Z9V-801	25	5	99000		
11100-Z9L-010	12	1	16044-Z9M-811	20	6	17620-Z9L-800	23	16				91201-Z9V-003	13	4
11100-Z9L-415	12	1	16100-Z9L-801	20	7	17622-888-010	23	17	35000			91202-Z9L-003	12	15
11300-Z9L-405	13	1	16100-Z9L-811	20	7	17701-Z9L-812	24	30				91301-Z9L-000	12	16
			16100-Z9M-811	20	7	17702-Z8B-802	24	31	35120-Z9L-811	23	18	91424-Z8B-901	23	21
12000			16155-ZM0-013	20	8					25	6	91427-Z8B-901	24	22
			16166-Z9L-811	20	9	18000						91501-Z0L-800	24	32
12100-Z9L-000	11	1	16166-Z9M-811	20	9				75000			91541-S0A-003	25	11
12100-Z9L-405	11	1	16211-Z9L-800	20	16	18300-Z9L-800	22	1						
12100-Z9M-000	11	1	16212-Z9L-000	20	10	18310-Z9L-000	22	2	75100-Z9V-000	25	7	93000		
12100-Z9M-405	11	1	16221-Z9L-000	20	11	18320-Z9L-000	22	3	75113-Z9L-020	25	8			
12209-Z8B-003	16	1	16500-Z9W-010	23	1	18350-Z9L-000	22	4				93500-05006-1H	20	14
12311-Z9L-000	11	2	16508-ZM0-010	12	5	18381-ZL8-305	22	5	87000			93500-05008-0A	13	5
12356-Z9L-000	13	2	16510-ZM0-010	12	6							93500-05016-0A	27	13
12377-Z9L-000	13	3	16511-ZL8-000	12	7	19000						93891-05008-07	19	7
			16512-ZM0-000	12	8				87114-ZH7-840	28	1	93891-05010-08	24	33
13000			16513-ZE1-000	12	9	19610-Z9R-000	19	2	87114-ZH7-860	28	1	93892-04012-00	24	23
			16531-Z1T-000	12	10	19612-Z9L-000	25	2	87169-Z9M-000	28	2		25	12
13010-Z9L-003	15	1	16531-ZE1-000	12	10	19721-Z9L-800ZA	19	3	87169-Z9V-000	28	11	93913-25220	24	24
13010-Z9M-003	15	1	16534-Z9W-000	23	2	19721-Z9L-800ZB	19	3	87169-Z9W-000	28	3			
13101-Z9L-000	15	2	16541-Z9L-000	12	11	19721-Z9L-800ZC	19	3	87169-Z9W-800	28	4	94000		
13101-Z9M-000	15	2	16551-Z9L-000	27	1	19721-Z9L-800ZD	19	3	87501-Z9W-000	28	5			
13111-Z8B-000	15	3	16555-Z9L-000	27	2	19721-Z9W-010ZA	19	4	87516-Z9V-000	28	6	94050-06000	21	7
13200-Z9L-000	15	4	16561-Z9P-000	27	3	19721-Z9W-010ZB	19	4	87516-Z9W-800	28	6		27	6
13311-Z9L-000	14	1	16561-Z9W-000	27	3	19721-Z9W-010ZC	19	4	87518-Z9L-000	28	7	94101-06800	12	17
13311-Z9L-810	14	5	16562-Z9L-000	27	4	19721-Z9W-010ZD	19	4	87519-Z9L-000	28	8	94103-04000	24	25
13311-Z9L-850	14	2	16576-ZE7-300	27	7	19721-Z9W-010ZE	19	4	87529-Z9R-000	28	9		25	13
13331-Z8B-900	25	1	16580-Z9L-820	27	8	19721-Z9W-801ZA	19	4	87592-Z9L-000	28	10	94251-08000	12	18
			16591-Z9W-000	23	3	19721-Z9W-801ZB	19	4				94301-08140	11	4
14000			16600-Z9L-000	20	12				90000				13	6
			16617-VG3-000	27	9	28000						95000		
14100-Z9L-000	16	2	16620-Z9L-003	20	13				90001-Z1L-000	15	5			
14100-Z9M-000	16	2	16674-Z9L-800	27	10	28400-Z9V-004	17	1	90001-Z9L-000	16	10	95001-45112-40	23	21
14311-Z9L-000	14	3	16854-ZH8-000	24	28	28400-Z9V-014	17	1	90004-ZL8-000	22	6	95001-75160-40	24	22
14410-Z9L-000	16	3	16950-Z0Y-003	23	4	28400-Z9W-003	18	1	90012-333-000	16	11	95002-02080	24	26
14431-Z9L-000	16	4	16950-Z9W-013	23	5	28400-Z9W-013	18	1	90012-ZCJ-000	16	11	95002-02120	24	27
14461-Z9L-000	16	5	16950-ZM0-003	24	29	28461-ZL8-003	17	2	90013-ZL8-000	12	12	95002-02130	24	27
14711-Z9L-000	16	6	16952-Z8B-000	23	6				90014-888-000	27	11	95002-40800-08	24	34
14731-Z9L-000	16	7	16959-Z9W-010	23	7	28462-ZL8-003	18	2	90014-952-000	23	19	95002-41000-08	24	35
14751-ZL8-000	16	8	16961-Z9L-000	23	8	28462-ZL8-V71	17	3				95002-41200-08	24	36
14771-Z0J-000	16	9	16964-Z9W-000	23	9				90015-ZE5-010	27	5	95002-50000	24	26
						30000			90018-ZE1-000	19	5	95701-06014-08	11	5
15000			17000							22	7		12	19
						30500-Z9L-004	25	3		25	9		13	7
15625-ZE6-000	12	2	17211-Z8B-901	21	2	30500-Z9V-003	26	16	90043-Z9L-000	11	3		17	4
15631-Z9L-000	12	3	17220-Z9L-800	21	9	30500-Z9V-004	25	3	90055-ZE1-000	22	8		18	4
15650-Z9L-000	12	4	17220-Z9V-000	21	3				90105-ZT3-000	23	20		26	14
15721-Z9L-000	21	1	17228-Z9L-000	21	4	31000			90206-001-000	16	12	95701-06022-08	26	15
15721-Z9L-800	21	8	17231-Z9L-000	21	5				90206-Z6L-000	16	12	95701-08025-08	11	6
			17238-Z9L-300	21	6	31110-Z9L-013	25	4	90213-Z9L-000	25	10		13	8
16000			17238-ZG9-M00	21	6	31110-Z9L-801	25	4	90320-GC3-000	19	6	95701-08040-08	11	7
			17511-Z9L-000	23	10	31110-Z9V-003	25	4	90402-Z9L-000	14	4			
16010-Z9L-811	20	1	17511-Z9L-800	23	10	31110-Z9V-801	25	4	90451-Z1T-000	12	13			
16013-ZL1-003	20	2	17532-Z9L-000	19	1				90451-ZE1-000	12	13	98000		
16015-Z9L-811	20	3		23	11	32000			90551-ZE0-000	15	6			
16016-Z9M-811	20	4		23	12				90602-ZE1-000	12	14	98079-55846	11	8
16016-ZG0-W00	20	4	17532-Z9W-000	23	12	32195-Z9V-000	25	5						
16028-ZE0-005	20	5	17533-Z9L-000	23	13	32195-Z9V-010	25	5						



PART NAME INDEX

Part name	Page	Ref.	Part name	Page	Ref.	Part name	Page	Ref.
[A]			CONTROL ASSY., CHOKE	20	12	[K]		
ARM, GOVERNOR	27	1	CORD, STOP SWITCH	25	5	KEY, SPECIAL WOODRUFF, 25X18 ..	25	1
ARM, VALVE ROCKER	16	4	COVER ASSY., CRANKCASE	13	1	KNOB, COCK CONTROL	23	7
ARRESTER COMP., SPARK	22	4	COVER COMP., FAN	19	2			
[B]			COVER, AIR CLEANER	21	5	[L]		
BASE COMP., CONTROL	27	8	COVER, BREATHER	13	2	LABEL, OPERATOR CAUTION	28	8
BOLT, CONNECTING ROD	15	5	COVER, CONTROL	23	3	LABEL, QR CODE	28	7
BOLT, FLANGE, 6X14	11	5	COVER, HEAD	11	2	LABEL, WARNING	28	1
	12	12	COVER, TOP	19	3	LIFTER, VALVE	16	7
		19	CRANKCASE ASSY.	12	1			
	13	7	CRANKSHAFT	14	1	[M]		
	17	4			2	MARK, AUTO CHOKE	28	9
	18	4	CYLINDER COMP.	11	1	MARK, ENGINE SWITCH	28	5
	23	19			5	MARK, FUEL COCK	28	10
	26	14	[D]			MARK, OPERATOR CAUTION	28	6
	27	12	DOWEL PIN, 8X14	11	4	MARK, TOP COVER	28	2
BOLT, FLANGE, 6X22	26	15		13	6			
BOLT, FLANGE, 6X23	19	5	[E]					
	22	7	ELEMENT, AIR CLEANER	21	2	MUFFLER ASSY.	22	1
	25	9	EXTENSION, OIL FILLER	12	3	MUFFLER COMP.	22	2
BOLT, FLANGE, 6X50	27	11	[F]					
BOLT, FLANGE, 6X79	22	6	FLOAT SET	20	2	[N]		
BOLT, FLANGE, 8X25	11	6	FLYWHEEL COMP.	25	4	NOZZLE, MAIN	20	9
	13	8				NUT, FLANGE, 14MM	25	10
BOLT, FLANGE, 8X40	11	7	[G]			NUT, FLANGE, 6MM	21	7
BOLT, GOVERNOR ARM	27	5	GASKET SET	20	1	NUT, SPRING, 5MM	27	6
BOLT, SHOULDER, 6MM	16	10	GASKET, MUFFLER	22	5	NUT, TAPPET ADJUSTING	19	6
BOLT, STUD, 6X82	11	3	GAUGE ASSY., OIL LEVEL	12	4			
BRAKE ASSY.	25	7	GEAR, TIMING	14	3	[O]		
			GOVERNOR ASSY.	12	6	OIL SEAL, 25.4X62X6	13	4
[C]			GRIP, STARTER	17	2	OIL SEAL, 28X41.25X6	12	15
CAMSHAFT ASSY.	16	2		18	2	O-RING, 19.1X2.2	12	16
CAP ASSY., FUEL TANK	23	15	[H]					
CARBURETOR ASSY.	20	7	HOLDER, CABLE	27	9	[P]		
CASE COMP., AIR CLEANER	21	3	HOLDER, GOVERNOR WEIGHT	12	8	PACKING, AIR CLEANER	21	4
		9				PACKING, CARBURETOR	20	11
CHAMBER SET, FLOAT	20	3	[I]			PACKING, INSULATOR	20	10
CHOKE SET	20	6	INSULATOR, CARBURETOR	20	16	PACKING, OIL FILLER CAP	12	2
CLAMP, TUBE	24	34				PIN, GOVERNOR WEIGHT	12	9
		35	[J]			PIN, LOCK, 8MM	12	18
		36	JET, MAIN, #62	20	15	PIN, PISTON	15	3
CLIP, GOVERNOR HOLDER	12	14	JET, MAIN, #65	20	15	PISTON	15	2
CLIP, HARNESS BAND	25	11	JET, MAIN, #68	20	15	PLATE, SIDE	25	2
CLIP, PISTON PIN, 13MM	15	6	JET, MAIN, #70	20	15	PLATE, SPRING	23	2
CLIP, TUBE	24	26				PLATE, VALVE	13	3
		27				PLUG, SPARK	11	8
COCK ASSY., FUEL	23	4				PROTECTOR COMP., MUFFLER	22	3
		5						
	24	29						
COIL ASSY., IGNITION	25	3						
	26	16						
	21	6						
COLLAR, AIR CLEANER	24	32						
COLLAR, FUEL COCK	24	32						
CONTROL ASSY.	23	1						

PART NAME INDEX

Part name	Page	Ref.	Part name	Page	Ref.	Part name	Page	Ref.
[R]			TUBE, FUEL TANK	24	30			
RETAINER, VALVE SPRING	16	9	TUBE, FUEL, 4.5X110	23	21			
RING SET, PISTON	15	1	TUBE, FUEL, 7.3X160	24	22			
ROD ASSY., CONNECTING	15	4	[V]					
ROD, CHOKE	27	10	VALVE, FLOAT	20	8			
ROD, GOVERNOR	27	2	VALVE, IN.	16	6			
ROD, PUSH	16	3	[W]					
ROPE, RECOIL STARTER	17	3	WASHER, PLAIN, 4MM	24	25			
	18	3		25	13			
RUBBER A, TANK MOUNTING	19	1	WASHER, PLAIN, 6MM	12	17			
	23	11	WASHER, THRUST	14	4			
		12	WASHER, THRUST, 6MM	12	13			
RUBBER B, TANK MOUNTING	23	13	WEIGHT, GOVERNOR	12	7			
RUBBER, SUPPORTER	24	28						
[S]								
SCREW-WASHER, 4X12	24	23						
	25	12						
SCREW-WASHER, 5X10	24	33						
SCREW-WASHER, 5X8	19	7						
SCREW SET	20	4						
		5						
SCREW, PAN, 4X19	23	20						
SCREW, PAN, 5X16	27	13						
SCREW, PAN, 5X6	20	14						
SCREW, PAN, 5X8	13	5						
SCREW, TAPPET ADJUSTING	16	11						
SCREW, TAPPING, 4X6	22	8						
SCREW, TAPPING, 5X12	24	24						
SEAL, VALVE STEM	16	1						
SHAFT COMP., GOVERNOR HOLDER ..	12	5						
SHAFT, GOVERNOR ARM	12	11						
SHAFT, ROCKER ARM	16	5						
SLIDER, GOVERNOR	12	10						
SPONGE, FUEL CAP BREATHER	23	17						
SPRING, BRAKE LEVER	25	8						
SPRING, COCK KNOB	23	9						
SPRING, GOVERNOR	27	3						
SPRING, LEVER	27	7						
SPRING, THROTTLE RETURN	27	4						
SPRING, VALVE	16	8						
STARTER ASSY., RECOIL	17	1						
	18	1						
STAY, FUEL COCK	23	8						
STAY, FUEL TANK	23	14						
STRAINER, FUEL	23	6						
SWITCH ASSY., ENGINE STOP	23	18						
	25	6						
[T]								
TANK, FUEL	23	10						
THERMOWAX ASSY.	20	13						
TUBE, BREATHER	21	1						
		8						
TUBE, FUEL	23	21						
	24	31						

1

FOREWORD INDEX

2

ENGINE GROUP

3

PART NUMBER INDEX

4

PART NAME INDEX

HONDA