

Mi-T-M® CORPORATION ■ Peosta, IA 52068

## ILLUSTRATED PARTS LIST

**FOR PRESSURE WASHER MODEL(S):  
CW-3004-0MGB, CW-3004-0MGH, CW-3004-0MGR**

(SERIAL #177952 - )

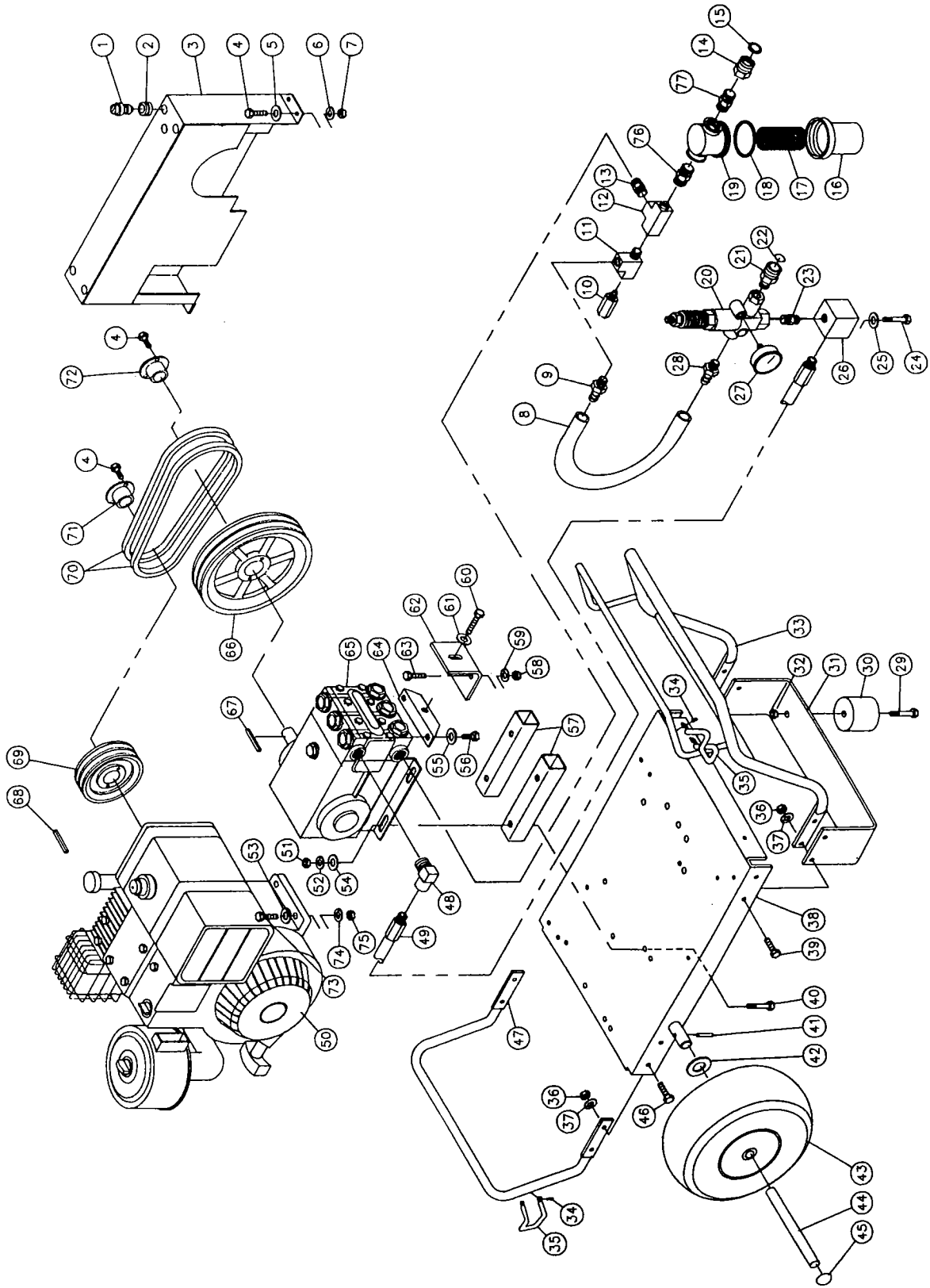
**CW-3004-0MGB, CW-3004-0MGH &  
CW-3004-0MGR PARTS LISTING KEY**

PUMP PART #:	3-0079
GEAR REDUCTION PART #:	NA
UNLOADER PART #:	8-0032
GUN/WAND ASSEMBLY PART #:	851-0095
GUN PART #:	16-0001

**SPECIFICATIONS:**

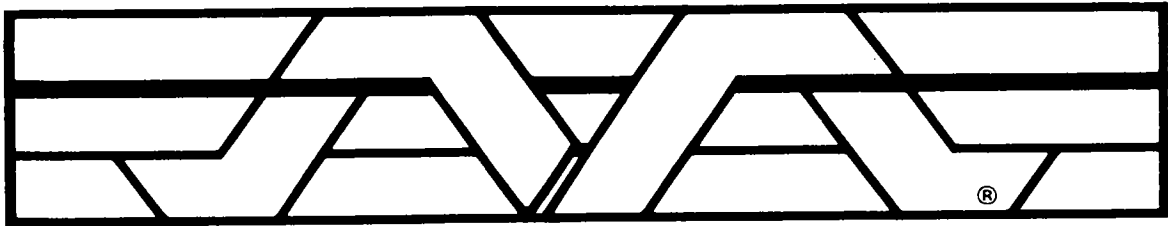
MAXIMUM PRESSURE ..... 3000 PSI  
 MAXIMUM FLOW ..... 3.5 GPM  
 NOZZLE SIZE ..... #4  
 PUMP OIL CAPACITY ..... 40.6 OZ.  
 PUMP OIL GRADE ..... SAE #30W NON-DET  
 ENGINE OIL CAPACITY ..... 42 OZ.  
 ENGINE OIL GRADE ..... #30-SE-SC-SF-SD  
 FUEL TANK CAPACITY ..... 192 OZ.  
 RECOMMENDED FUEL ..... LEAD FREE

**CW-3004-0MGB, CW-3004-0MGB & CW-3004-0MGR ASSEMBLY EXPLODED VIEW AS OF SERIAL #177952**



**CW-3004-0MGB, CW-3004-0MGH & CW-3004-0MGR ASSEMBLY PARTS LISTING AS OF SERIAL #177952**

Ref. No.	Description	Part No.	Qty.	Ref. No.	Description	Part No.	Qty.
1	Nozzle, 0004	18-0028	1	36	Base plate (CW-3004-0MGR)	5-0007	1
1	Nozzle, 1504	18-0029	1	39	Bolt	27-0067	4
1	Nozzle, 2504	18-0030	1	40	Bolt	27-0173	4
1	Nozzle, 4004	18-0031	1	41	Roll pin	43-0002	1
2	Grommet	33-0001	5	42	Flatwasher	28-0008	3
3	Belt guard	6-0001	1	43	Wheel	14-0006	2
4	Bolt	27-0015	4	44	Axle (CW-3004-0MGB, 0MGR)	20-0008	1
5	Flatwasher	28-0002	4	44	Axle (CW-3004-0MGH)	20-0007	1
6	Lockwasher	29-0006	4	45	Hub cap	33-0018	2
7	Hex nut	30-0002	4	46	Bolt	27-0066	4
8	Bypass hose	15-0035	1	47	Rear handle	7-0011	1
9	Hose barb locking	23-0007	1	48	Elbow	24-0005	1
10	Heat dump valve	22-0005	1	49	Hose	15-0024	1
11	Street tee	23-0124	1	50	Engine (CW-3004-0MGB)	1-0005	1
12	Tee	23-0043	1	50	Engine (CW-3004-0MGH)	1-0039	1
13	Hex nipple	23-0012	1	50	Engine (CW-3004-0MGR)	1-0011	1
14	Garden hose swivel (CW-3004-0MGB)	23-0095	1	51	Hex nut	30-0008	4
14	Garden hose swivel (CW-3004-0MGH, 0MGR)	23-0021	1	52	Lockwasher	29-0009	4
15	Garden hose gasket	26-0001	1	53	Flatwasher (CW-3004-0MGB, 0MGR)	N/A	
16	Strainer bowl (CW-3004-0MGB)	19-0060	1	53	Flatwasher (CW-3004-0MGH)	28-0005	4
16	Strainer bowl (CW-3004-0MGH, 0MGR)	19-0025	1	54	Flatwasher	28-0005	4
17	Strainer steel screen (CW-3004-0MGB)	19-0059	1	55	Lockwasher	29-0055	2
17	Strainer steel screen (CW-3004-0MGH, 0MGR)	19-0015	1	56	Bolt	27-8471	2
18	Strainer gasket (CW-3004-0MGB)	26-0160	1	57	Pump mounts	13-0028	2
18	Strainer gasket (CW-3004-0MGH, 0MGR)	26-0072	1	58	Hex nut	30-0006	2
19	Strainer cap (CW-3004-0MGB)	19-0058	1	59	Lockwasher	29-0008	2
19	Strainer cap (CW-3004-0MGH, 0MGR)	19-0024	1	60	Bolt	27-0576	1
19	Strainer Assembly Complete (Includes items 14-19 & 77)	19-0057	1	61	Flatwasher	28-0023	1
	Strainer Assembly Complete (Includes items 16-19)	19-0057	1	62	Tightener brace angle	13-0003	1
	Strainer Assembly Complete (Includes items 16-19)	19-0004	1	63	Bolt	27-0117	2
20	Unloader Valve Assembly Complete	8-0032	1	64	Pump tightener angle with nut	13-0050	1
21	Quick connect socket	17-0029	1	65	Pump	3-0079	1
22	O-ring	25-0123	1	66	Pump sheave	10-0040	1
23	Hex nipple	24-0031	1	67	Key	43-0048	1
24	Bolt	27-0116	2	68	Key	43-0039	1
25	Lockwasher	29-0008	2	69	Engine sheave	10-0029	1
26	Manifold block	51-0012	1	70	Belt (CW-3004-0MGB)	11-0036	2
27	Pressure gauge	22-0107	1	70	Belt (CW-3004-0MGH, 0MGR)	11-0011	2
28	Hose barb locking	23-0007	1	71	Engine bushing (CW-3004-0MGB, 0MGH)	9-0005	1
29	Bolt	27-0068	2	71	Engine bushing (CW-3004-0MGR)	9-0010	1
30	Isolator	14-0008	2	72	Pump bushing	9-0017	1
31	Underbracket	13-0042	1	73	Bolt (CW-3004-0MGB)	27-0070	4
32	Hex nut locking	30-0157	2	73	Bolt (CW-3004-0MGH, 0MGR)	27-0170	4
33	Front handle	7-0010	1	74	Lockwasher (CW-3004-0MGB)	29-0008	4
34	Hex washer head screw	27-3061	4	74	Lockwasher (CW-3004-0MGH, 0MGR)	29-0009	4
35	Wand holder	20-0181	2	75	Hex nut (CW-3004-0MGB)	30-0006	4
36	Hex nut	30-0004	8	75	Hex nut (CW-3004-0MGH, 0MGR)	30-0008	4
37	Lockwasher	29-0007	8	76	Hex nipple (CW-3004-0MGB)	23-0012	1
38	Base plate (CW-3004-0MGB)	5-0007	1	76	Hex nipple (CW-3004-0MGH, 0MGR)	23-0082	1
38	Base plate (CW-3004-0MGH)	5-0005	1	77	Hex nipple (CW-3004-0MGB)	N/A	
				77	Hex nipple (CW-3004-0MGH, 0MGR)	23-0026	1



**Mi-T-M<sup>®</sup> CORPORATION**